

SCHOOL STATISTICS 2005

100000

80000

60000

40000

20000

1992

1993

1994

1995

1996

1997

1998

1999

2000

2001

2002

2003

2004

2005



TABLE OF CONTENTS

	Pages		Pages
INTRODUCTION	1	SECTION 5: ENROLMENTS BY SCHOOL	
SECTION 1: ENROLMENT TRENDS & ANALYSIS		Male'	42
Total Enrolment (1992 - 2005)	2	Haa Alifu	43
Transition Rate from Primary to Secondary (1999 - 2005)	4	Haa Dhaalu	44
Gross & Net Enrolment Ratio by Gender by Level (1997- 2005)	6	Shaviyani	45
Gender Parity Index & Age specific Enrolment Rates by Gender - 2005	7	Noonu	46
Proportion of students under-age, over-age & on-time by grade & gender - 2005	8	Raa	47
Trends by Level (1999-2005)	9	Baa	48
Trends by Level Male' and Atolls (2001 - 2005)	11	Lhaviyani	49
By Level and Type	15	Kaafu	50
Male' and Atolls by Grade and Gender	17	Alifu Alifu	51
Male' and Atolls by Gender	20	Alifu Dhaalu	52
SECTION 2: SCHOOLS		Vaavu	53
Male' and Atolls by Provision	22	Meemu	54
Frequency Distribution of Schools by Size of Enrolment	23	Faafu	55
Frequency Distribution of Pre-Schools by Size of Enrolment	25	Dhaalu	56
Male' and Atolls and Level (Government)	26	Thaa	57
Male' and Atolls and Level (Community)	27	Laamu	58
Male' and Atolls and Level (Private)	28	Gaafu Alifu	59
Male' and Atolls and Level (Republic)	29	Gaafu Dhaalu	60
SECTION 3: TEACHERS		Gnaviyani	61
Different Levels, by Job Categories	30	Seenu	62
Male' and Atolls by Job Categories	34		
Schools, Enrolment and Teachers by Male' and Atolls	35		
SECTION 4: STUDENT POPULATION AT ISLAND LEVEL			
Student Enrolment by Atolls and Zone Level	36		
Haa Alifu, Haa Dhaalu, Shaviyani, Noonu	37		
Raa, Baa, Lhaviyani, Kaafu	38		
Alifu Alifu, Alifu Dhaalu, Vaavu, Meemu	39		
Faafu, Dhaalu, Thaa, Laamu	40		
Gaafu Alifu, Gaafu Dhaalu, Gnaviyani, Seenu	41		

INTRODUCTION

The Policy Planning and Research Section at the Ministry of Education has the pleasure of presenting *School Statistics 2005*, previously named as *Education Statistics*, aimed at providing suitable and effective statistical information for educational planners, administrators, researchers and other stakeholders.

This publication is considered an integral part of the Educational Management Information System (EMIS) and an essential source for quantitative educational data which reflects the improvement in educational policies and educational development in Maldives.

Improving the accuracy and reliability of the data has been one of our key objectives, and we have been continuously revising and updating the qualitative and quantitative aspects of the data that is collected, analyzed and presented, to make it as informative as possible.

In addition to the information we have been presenting in the past, in this edition you will find a significant change in the enrolments of some schools due to the Tsunami in 2004 and a marked increase in the number of government schools in 2005 due to a policy change of the Ministry of Education.

We would like to thank all the schools in the country for their commitment in providing the requested data for this publication and all other educational bodies within the Ministry of Education for their valuable contributions to the preparation of the book. We hope that this book will fulfill its objective of providing essential information to the education sector.

SECTION: 1

(މިއަހަރުގެ ފަތުރުވެރިންގެ ސަބަބުން ގެޒެޓްކުރި ދަރިވަރުންގެ އަދަދު)

STUDENT ENROLMENT IN MALDIVES (GROSS)
(1992 - 2005)

Provision	1992	1993	1994	1995	1996	1997	1998	1999	2000	2001	2002	2003	2004	2005
Republic														
Total	73642	78639	83855	87878	90597	93375	97323	101081	105356	106391	106220	104408	104214	102073
Government Schools	32475	35138	36693	39032	40935	43757	46352	49721	53413	56224	56579	58682	57139	83563
Community Schools	33779	35486	38662	39565	40153	41295	42159	42524	42352	40448	40519	37540	38042	9845
Private Schools	7388	8015	8500	9281	9509	8323	8812	8836	9591	9719	9122	8186	9033	8665
Male'														
Total	22802	23177	23500	24570	25641	26190	27057	27714	28547	28306	28243	28950	29307	30036
Government Schools	12568	12962	13226	13255	13567	14124	14588	15167	15820	16456	16845	17838	18278	19564
Community Schools	6014	5838	5810	6368	7418	7875	8348	8382	8326	7749	8030	7737	7559	7107
Private Schools	4220	4377	4464	4947	4656	4191	4121	4165	4401	4101	3368	3375	3470	3365
Atolls														
Total	50840	55462	60355	63308	64956	67185	70266	73367	76809	78085	77977	75458	74907	72037
Government Schools	19907	22176	23467	25777	27368	29633	31764	34554	37593	39768	39734	40844	38861	63999
Community Schools	27765	29648	32852	33197	32735	33420	33811	34142	34026	32699	32489	29803	30483	2738
Private Schools	3168	3638	4036	4334	4853	4132	4691	4671	5190	5618	5754	4811	5563	5300

(2005 2004 2003 2002 2001 2000 1999) 2005 2004 2003 2002 2001 2000 1999

TRANSITION RATE FROM PRIMARY TO SECONDARY BY ATOLL, MALE' AND NATIONAL

1999 - 2005

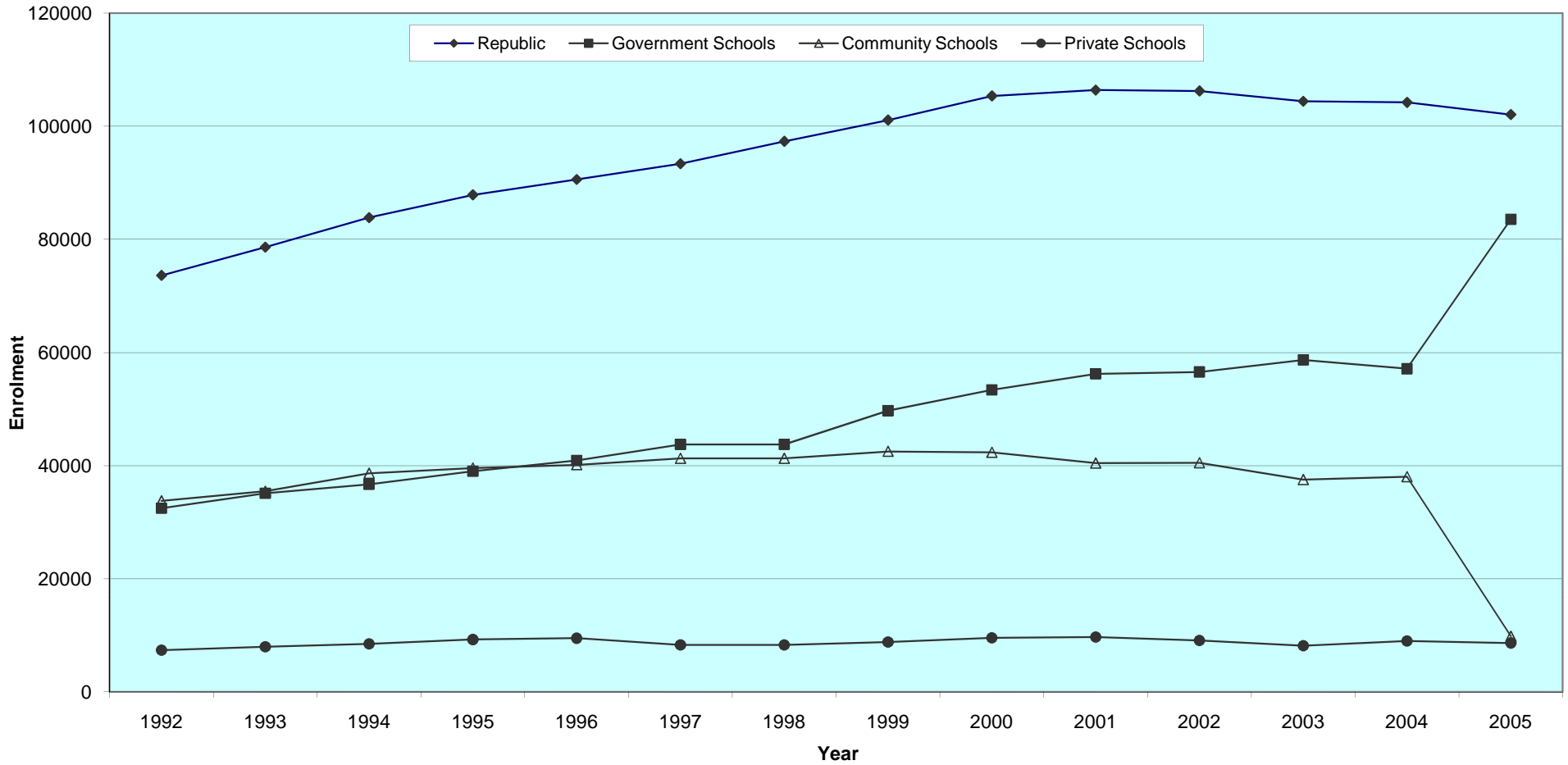
Atolls	1999-2000 (%)			2000-2001 (%)			2001-2002 (%)			2002-2003 (%)			2003-2004 (%)			2004-2005 (%)			% Change 1999-2005		
	F	M	Total	F	M	Total	F	M	Total	F	M	Total	F	M	Total	F	M	Total	F	M	Total
Haa Alifu	32	34	33	44	50	47	41	40	41	46	34	40	45	36	41	81	75	78	50	41	45
Haa Dhaalu	32	27	30	30	26	28	26	20	23	29	26	28	33	30	31	73	65	69	41	38	40
Shaviyani	41	45	43	43	56	50	59	60	60	62	59	60	68	65	67	107	95	101	65	50	58
Noonu	34	45	40	50	49	49	39	41	40	41	35	38	50	46	48	74	66	70	39	20	30
Raa	36	34	35	41	59	50	60	64	62	55	52	54	59	54	57	94	76	85	58	42	50
Baa	49	62	56	50	54	52	50	57	53	60	60	60	55	51	53	84	85	85	35	23	29
Lhaviyani	41	46	44	58	53	55	55	52	53	39	30	35	43	37	40	73	66	69	31	19	25
Kaafu	17	25	21	47	48	47	37	40	38	26	22	24	35	33	34	69	53	61	51	28	40
Alifu Alifu	27	27	27	23	21	22	22	20	21	40	24	32	37	35	36	53	53	53	26	26	26
Alifu Dhaalu	46	52	49	47	51	49	54	51	53	50	35	43	50	41	46	75	73	74	29	21	25
Vaavu	30	32	31	53	57	55	64	73	69	56	54	55	56	69	62	94	81	88	64	49	57
Meemu	49	59	54	68	62	65	60	57	58	63	53	58	50	48	49	91	87	89	41	28	34
Faafu	52	54	53	54	52	53	42	50	46	56	43	50	54	48	51	78	81	79	26	28	27
Dhaalu	26	22	24	31	37	34	36	40	38	53	44	48	64	68	66	91	92	92	65	70	68
Thaa	24	28	26	43	40	41	54	52	53	50	51	51	48	48	48	79	82	80	55	53	54
Laamu	63	63	63	53	57	55	59	56	57	50	40	45	47	45	46	76	74	75	13	11	12
Gaafu Alifu	58	58	58	57	52	54	47	55	51	37	27	32	51	48	49	78	75	76	20	17	18
Gaafu Dhaalu	49	44	46	55	52	54	57	42	50	52	48	50	73	55	64	73	68	70	24	25	24
Gnaviyani	40	36	38	66	55	60	44	42	43	71	52	61	80	43	61	104	91	98	64	56	60
Seenu	65	56	60	55	47	51	56	45	50	65	58	61	76	60	68	82	77	79	17	21	19
Male'	112	108	110	120	120	120	142	120	131	140	129	134	138	127	133	131	125	128	18	17	18
National	60	61	61	64	65	65	68	61	64	68	58	63	71	62	66	92	84	88	31	23	27

Note: Percentage of transition rate more than 100% is as a result of students' migration from other island school

ދިވެހިރާއްޖޭގެ ޖުމްހޫރިއްޔާއި ސަރުކާރުގެ ދާއިރާގެ ސަބަބުން ދިވެހިރާއްޖޭގެ ސަރުކާރުގެ ދާއިރާގެ ސަބަބުން (މަސައްދަތް)

(ނަންބަރުގެ ސަބަބުން ސަރުކާރުގެ ދާއިރާގެ ސަބަބުން)

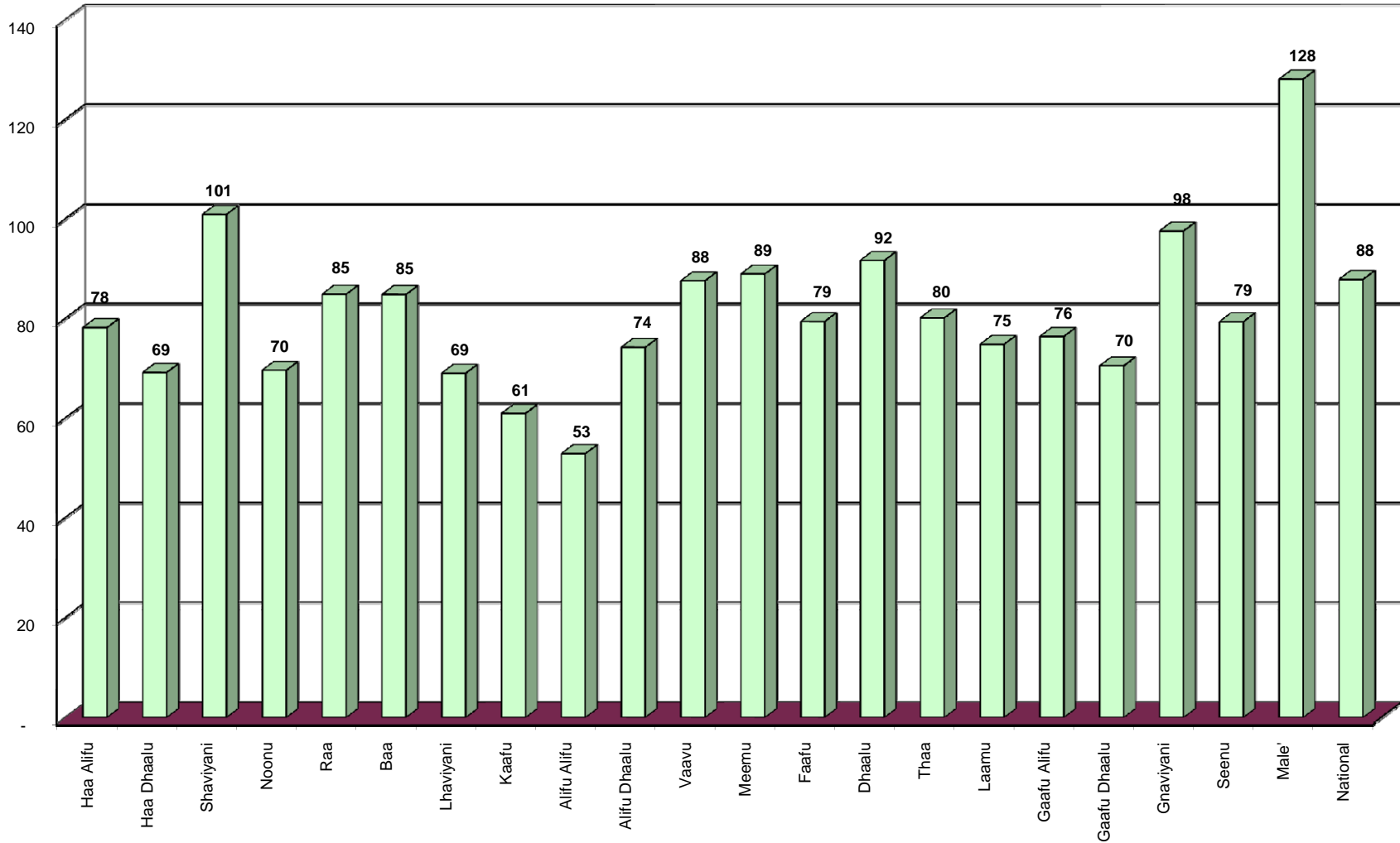
STUDENT ENROLMENT IN MALDIVES (GROSS)
(BY TYPE OF PROVISION)
1992 - 2005



Note : 135 community schools were converted to government schools in 2005 due to an educational policy change

މާލdives ސަރުކާރުގެ ގެޒެޓް (ދިވެހިރާއްޖޭގެ ޖުމްހޫރިއްޔާ ގުޅިގެން)

Transition Rate by Atolls and Male' Primary to Lower Secondary
2005



Note: Percentage of transition rate more than 100% is as a result of students' migration from other island school

ශ්‍රී ලංකා විද්‍යාල පාලන කොමිෂන් සභාව (විද්‍යා මට්ටම) (1997 - 2005)
 NET AND GROSS ENROLMENT RATIO BY LEVEL
 (1997 - 2005)

	Net Enrolment Ratio Primary										Gross Enrolment Ratio Primary								
	1997	1998	1999	2000	2001	2002	2003	2004	2005	1997	1998	1999	2000	2001	2002	2003	2004	2005	
Both Sexes	99.5	99.2	98.7	98.0	98.2	100.0	100.0	100.0	100.0	127.5	123.7	119.8	116.2	127.4	127.8	129.3	128.9	123.0	
Female	99.5	98.4	98.1	97.1	97.4	100.0	100.0	100.0	100.0	125.5	121.1	117.0	112.9	125.6	125.7	126.1	125.3	119.8	
Male	99.5	99.9	99.4	98.8	98.9	100.0	100.0	100.0	100.0	129.6	126.3	122.6	119.5	129.1	129.9	132.3	132.4	126.0	

	Net Enrolment Ratio Lower Secondary										Gross Enrolment Ratio Lower Secondary								
	1997	1998	1999	2000	2001	2002	2003	2004	2005	1997	1998	1999	2000	2001	2002	2003	2004	2005	
Both Sexes	18.9	22.3	28.2	36.6	42.5	44.2	51.7	52.1	64.6	46.2	54.5	64.7	79.4	88.1	94.7	101.4	105.4	118.0	
Female	21.0	24.0	30.1	39.7	46.7	48.3	56.4	58.2	70.7	47.3	56.3	67.5	84.0	94.1	102.4	110.4	114.5	126.1	
Male	16.8	20.7	26.3	33.7	38.4	40.3	47.2	46.3	58.8	45.0	52.7	62.0	74.9	82.3	87.4	92.7	96.7	110.4	

	Net Enrolment Ratio Higher Secondary										Gross Enrolment Ratio Higher Secondary								
	1997	1998	1999	2000	2001	2002	2003	2004	2005	1997	1998	1999	2000	2001	2002	2003	2004	2005	
Both Sexes	1.1	0.2	1.0	1.3	1.4	1.6	1.8	3.9	7.2	3.3	3.4	3.4	4.5	5.6	7.3	7.3	9.7	11.5	
Female	na	na	na	na	1.4	1.8	2.2	4.3	7.8	na	na	na	na	4.5	6.6	6.6	9.4	11.1	
Male	na	na	na	na	1.3	1.5	1.7	3.5	6.7	na	na	na	na	6.6	8.0	8.0	10.1	11.9	

na - not available

دہلی کی تعلیمی سرگرمیوں کی پیش گوئی (پندرہویں پانچویں سال)

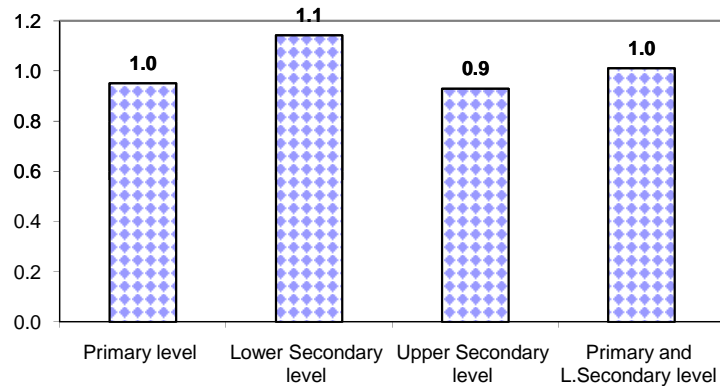
Gross and Net Enrolment Ratio
(March 2005)

Level / Age Group	Population			Enrolment (Official age)			Enrolment			Gross Enrolment Ratio			Net Enrolment Ratio		
	Female	Male	Both Sexes	Female	Male	Both Sexes	Female	Male	Both Sexes	Female	Male	Both Sexes	Female	Male	Both Sexes
Primary level (Gr. 1 - 7) : Age 6 - 12	23089	23973	47062	23761	25248	49009	27667	30206	57873	119.8	126.0	123.0	102.9	105.3	104.1
Lower Secondary level (Gr. 8 - 10) : Age 13 - 15	11877	12389	24266	8399	7279	15678	14973	13673	28646	126.1	110.4	118.0	70.7	58.8	64.6
Upper Secondary level (Gr. 11 - 12) : Age 16 - 17	8259	8605	16864	645	577	1222	916	1026	1942	11.1	11.9	11.5	7.8	6.7	7.2
Primary and L. Secondary level (Gr. 1 - 10) : Age 6 - 15	34966	36362	71328	32160	32527	64687	42640	43879	86519	121.9	120.7	121.3	92.0	89.5	90.7

Source:

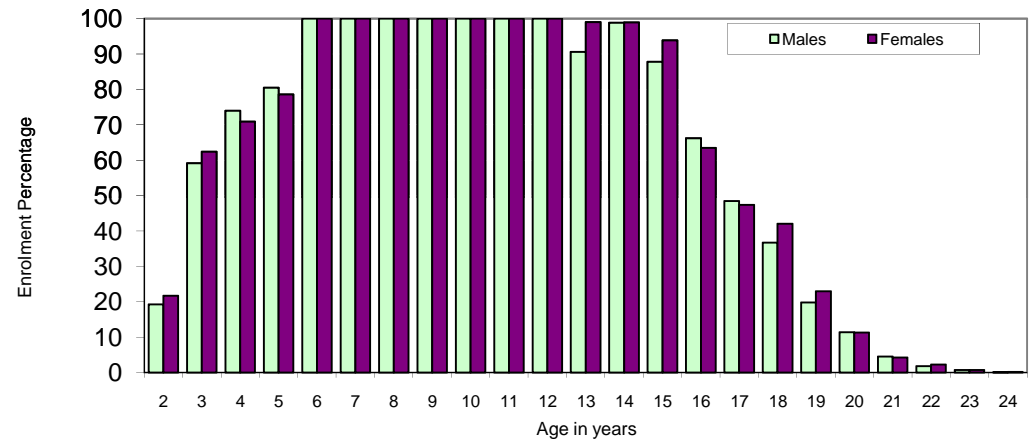
Population: Projected Mid-Year Population - Ministry of Planning and National Development

GENDER PARITY INDEX (GPI) BY LEVELS



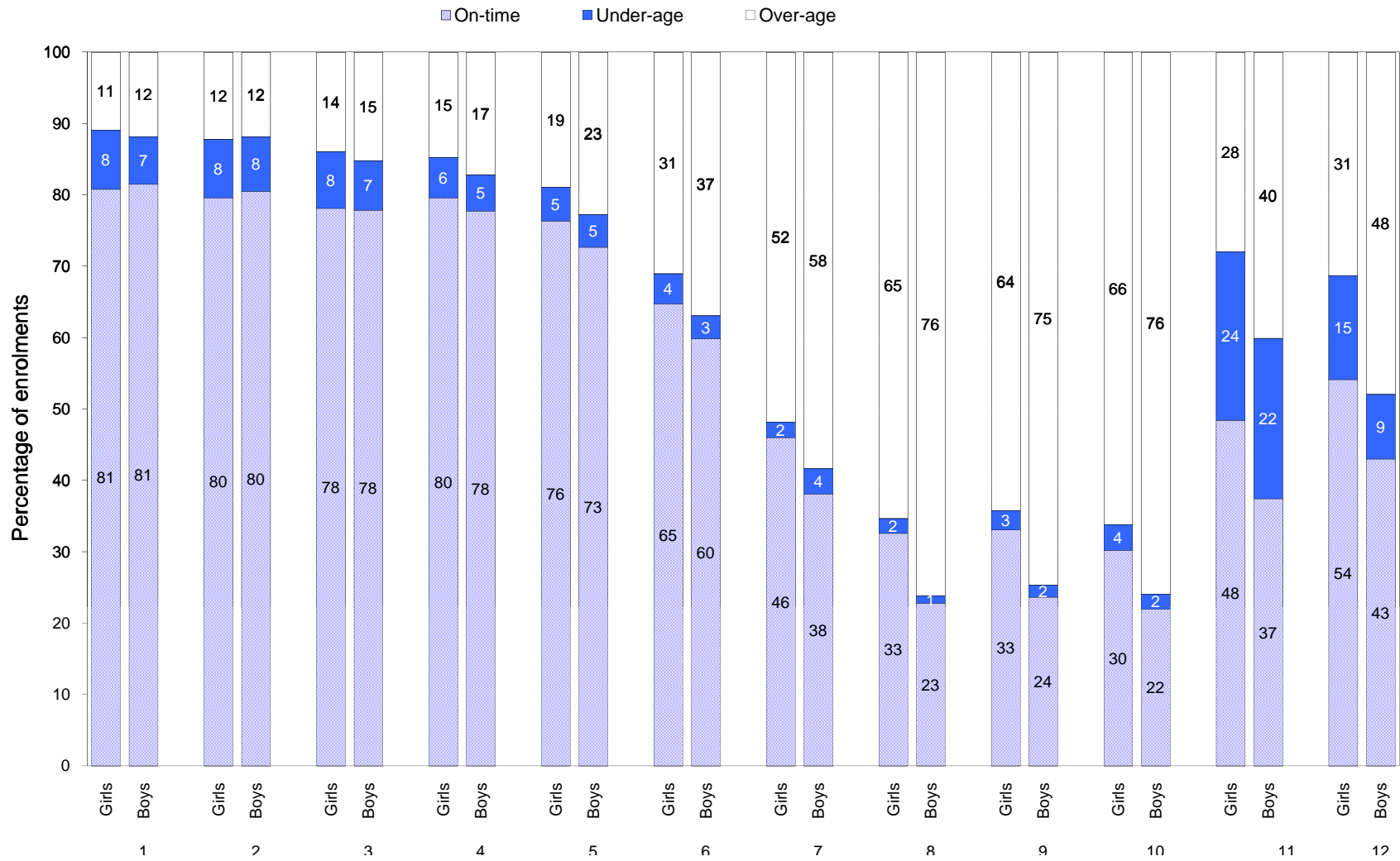
Note: The closer the GPI is to 1.0, the greater is the gender parity. A GPI of 1.0 on the other hand, indicates gender parity. A GPI greater than 1.0 indicates a gender disparity in favor of females, meaning more females than males attend school.

AGE- SPECIFIC ENROLMENT RATES BY GENDER, 2005



Note: Age 2 to 3 more females attend school than males. Age 4 to 5 more males attend school than females. There is gender parity from age 6 to 14 except age 13. Age 16 to 17 more males attend school. At age 18 more females attend school than males.

Proportion of students under-age, over-age, and on-time by grade and gender- 2005



بِسْمِ اللّٰهِ الرَّحْمٰنِ الرَّحِیْمِ

ENROLMENT TRENDS BY LEVEL

(1999 - 2005)

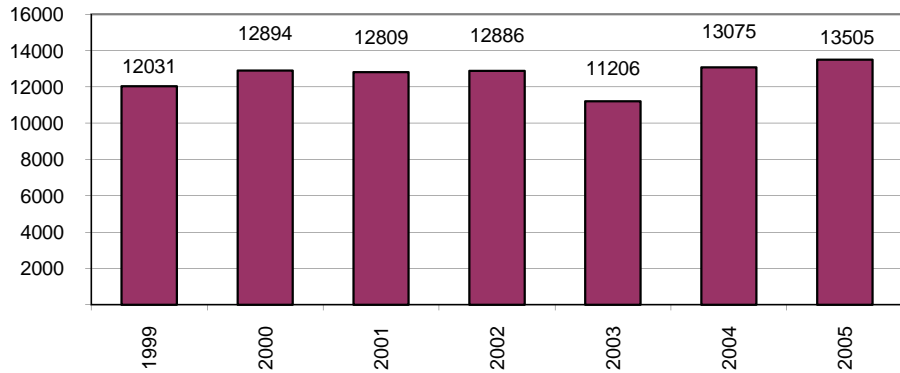
LEVEL	1999			2000			2001			2002			2003			2004			2005		
	FEMALE	MALE	TOTAL	FEMALE	MALE	TOTAL	FEMALE	MALE	TOTAL	FEMALE	MALE	TOTAL	FEMALE	MALE	TOTAL	FEMALE	MALE	TOTAL	FEMALE	MALE	TOTAL
Pre-Primary (NURS, LKG, UKG)	5815	6216	12031	6324	6570	12894	6335	6474	12809	6323	6563	12886	5540	5666	11206	6457	6618	13075	6611	6894	13505
Primary (Grades 1 - 7)	36203	37847	74050	35764	37758	73522	34384	36670	71054	32801	35441	68242	31621	34548	66169	30160	33140	63300	27667	30206	57873
Lower Secondary (Grades 8 - 10)	7471	7060	14531	9518	8736	18254	11368	10276	21644	12656	11247	23903	13594	11892	25486	13896	12245	26141	14973	13673	28646
Higher Secondary (Grades 11 - 12)	192	265	457	274	364	638	330	494	824	504	627	1131	709	772	1481	765	857	1622	916	1026	1942
Special Classes*	6	6	12	21	27	48	31	29	60	24	34	58	29	37	66	31	45	76	54	53	107
	49687	51394	101081	51901	53455	105356	52448	53943	106391	52308	53912	106220	51493	52915	104408	51309	52905	104214	50221	51852	102073

* Special classes conducted for children with disabilities

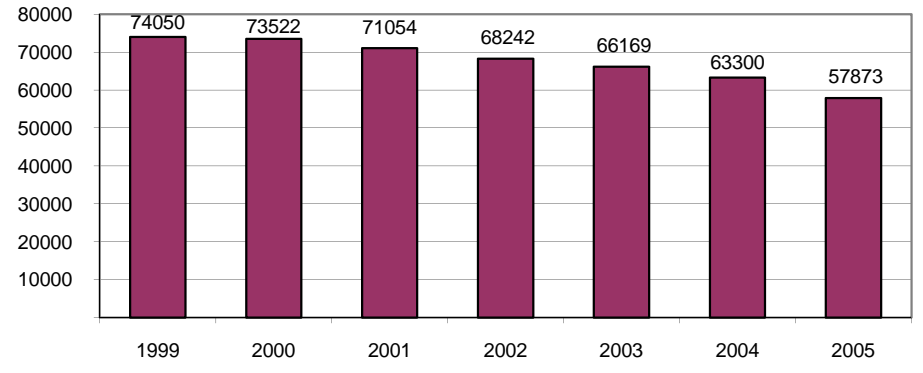
ENROLMENT TRENDS BY LEVEL

1999 - 2005

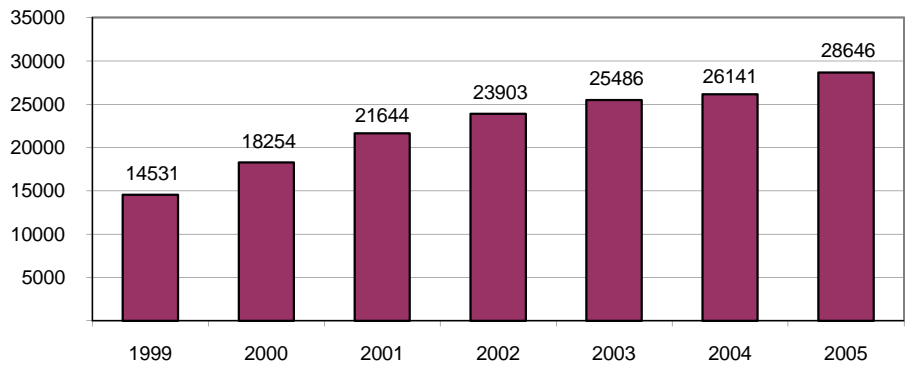
**Enrolment of Pre-Primary (NURS, LKG, UKG)
1999 - 2005**



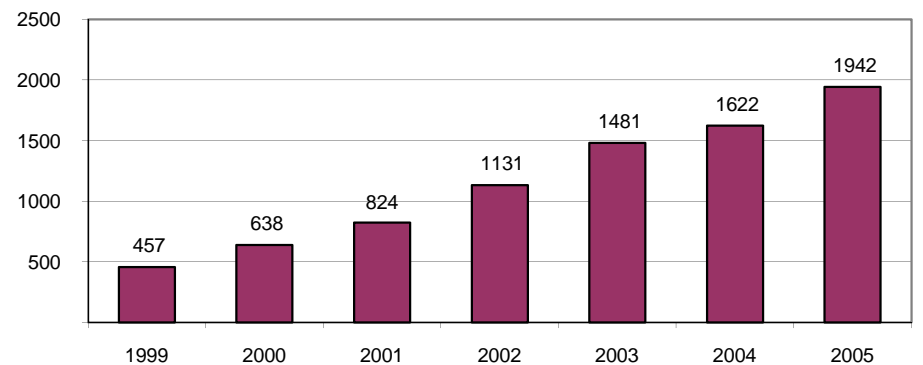
**Enrolment of Primary (Grades 1 - 7)
1999 - 2005**



**Enrolment of Lower Secondary (Grades 8 - 10)
1999 - 2005**



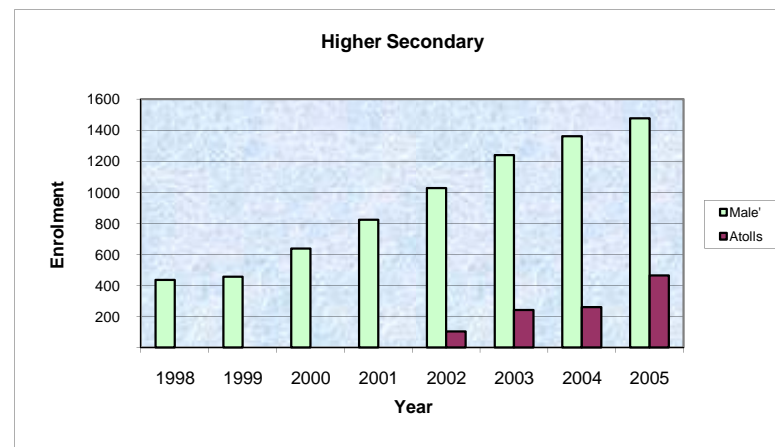
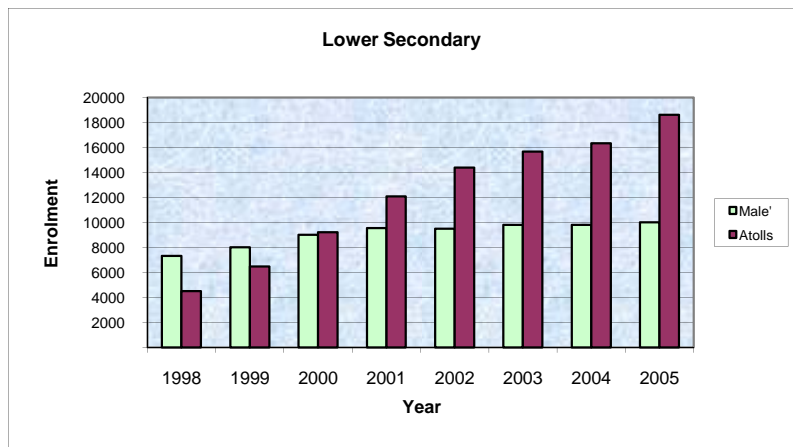
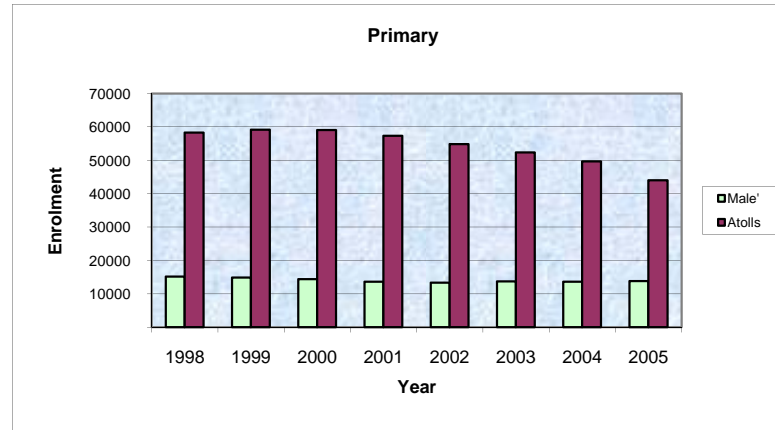
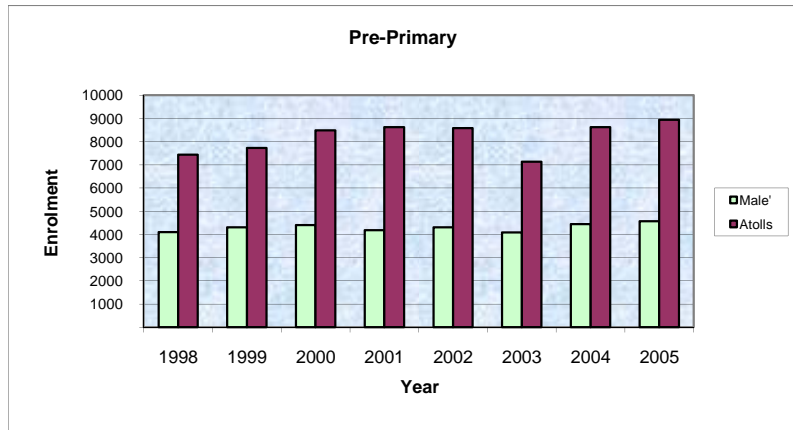
**Enrolment of Higher Secondary (Grades 11 - 12)
1999 - 2005**



ދިވެހިރާއްޖޭގެ ސަރުކާރުގެ ގެޒެޓްގައި ބަޔާންކޮށްފައިވާ ގޮތުން
 ENROLMENT TRENDS BY LEVEL - MALE' AND ATOLLS
 (2001 - 2005)

LEVEL	2001						2002						2003						2004						2005					
	MALE'			ATOLLS			MALE'			ATOLLS			MALE'			ATOLLS			MALE'			ATOLLS			MALE'			ATOLLS		
	FEMALE	MALE	TOTAL	FEMALE	MALE	TOTAL	FEMALE	MALE	TOTAL	FEMALE	MALE	TOTAL	FEMALE	MALE	TOTAL	FEMALE	MALE	TOTAL	FEMALE	MALE	TOTAL	FEMALE	MALE	TOTAL	FEMALE	MALE	TOTAL	FEMALE	MALE	TOTAL
Pre-Primary (Nurs, LKG, UKG)							2135	2170	4305	4188	4393	8581	1998	2081	4079	3542	3585	7127	2209	2241	4450	4248	4377	8625	2239	2329	4568	4372	4565	8937
Primary (Grades 1 - 7)	6894	6793	13687	27490	29877	57367	6695	6660	13355	26106	28781	54887	6847	6916	13763	24774	27632	52406	6750	6856	13606	23410	26284	49694	6774	7100	13874	20893	23106	43999
Lower Secondary (Grades 8 - 10)	4975	4576	9551	6393	5700	12093	5165	4332	9497	7491	6915	14406	5460	4343	9803	8134	7549	15683	5486	4328	9814	8410	7917	16327	5559	4457	10016	9414	9216	18630
Higher Secondary (Grades 11 - 12)	330	494	824				457	571	1028	47	56	103	597	642	1239	112	130	242	641	720	1361	124	137	261	726	751	1477	190	275	465
Special Classes*							24	34	58				29	37	66				31	45	76				50	51	101	4	2	6
TOTAL	12199	11863	24062	33883	35577	69460	14476	13767	28243	37832	40145	77977	14931	14019	28950	36562	38896	75458	15117	14190	29307	36192	38715	74907	15348	14688	30036	34873	37164	72037

ENROLMENT TRENDS BY LEVEL - MALE' AND ATOLLS
(1998 - 2005)



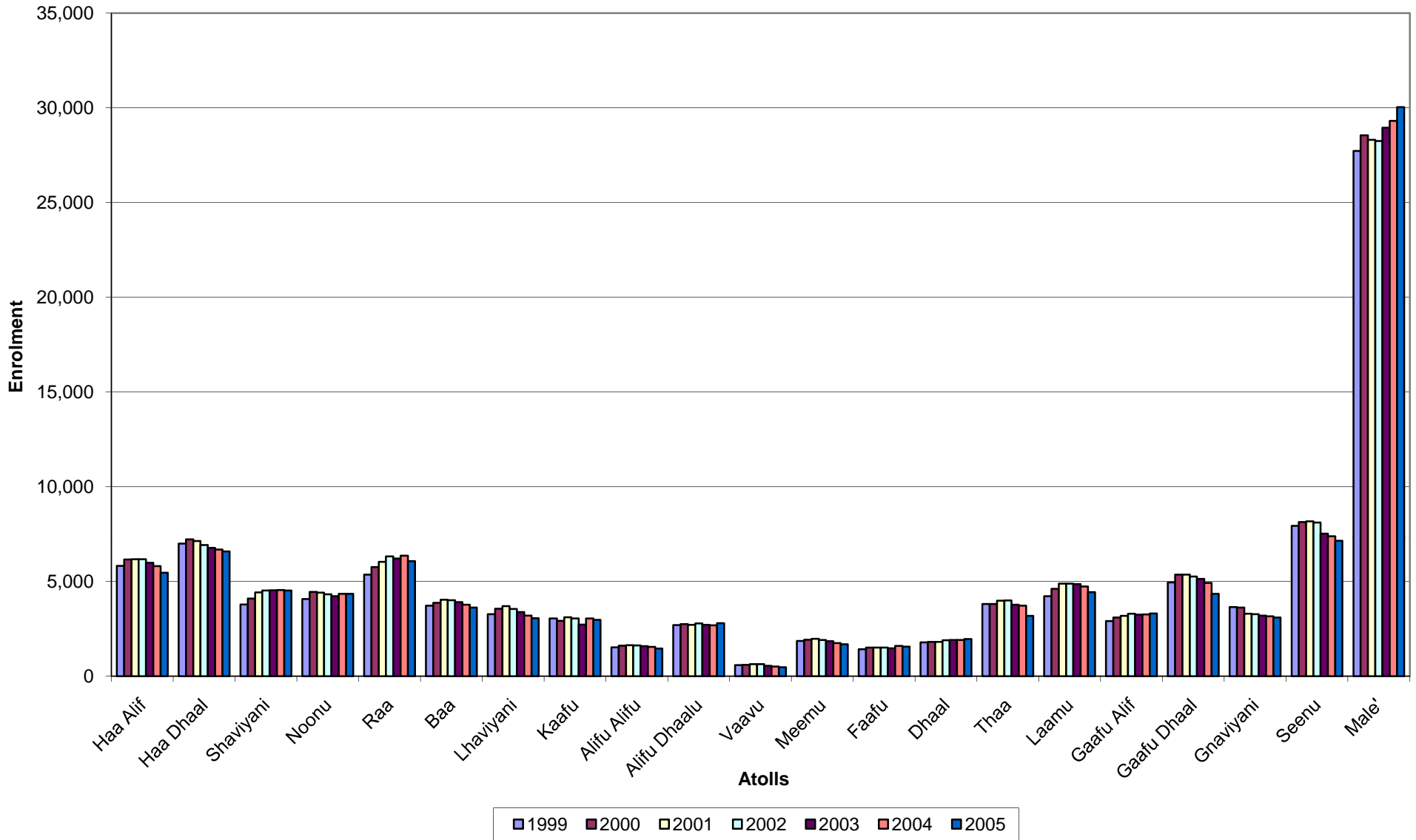
Note: 2001 - Expansion of Higher Secondary Education in 2 schools were introduced in the atolls.
 2002 - Another school was established in the atolls
 2004 - Ten new schools were established.
 2005 - Four new schools were established in June 2005 and now a total of 19 higher secondary schools are in the country (data not included)

ދިވެހިރާއްޖޭގެ ޖުމްހޫރިއްޔުގެ ސަރުކާރުގެ ޕްލާނިންގ ޕްރޮޖެކްޓް
 ENROLMENT TRENDS BY MALE' AND ATOLLS
 (2004 - 2005)

Name of Atoll	2004				2005							
	Female	change *	Male	change *	Total	change *	Female	change *	Male	change *	Total	change *
Haa Alifu	2,869	-5.38%	2,940	-6.22%	5,809	-5.81%	2,665	-7.11%	2,793	-5.00%	5,458	-6.04%
Haa Dhaalu	3,225	-9.44%	3,452	-3.25%	6,677	-6.34%	3,175	-1.55%	3,406	-1.33%	6,581	-1.44%
Shaviyani	2,189	0.60%	2,353	4.72%	4,542	2.69%	2,204	0.69%	2,321	-1.36%	4,525	-0.37%
Noonu	2,130	-2.34%	2,218	-0.27%	4,348	-1.29%	2,145	0.70%	2,204	-0.63%	4,349	0.02%
Raa	3,091	6.18%	3,265	4.82%	6,356	5.48%	2,973	-3.82%	3,091	-5.33%	6,064	-4.59%
Baa	1,698	-9.82%	2,077	-3.08%	3,775	-6.23%	1,633	-3.83%	1,983	-4.53%	3,616	-4.21%
Lhaviyani	1,557	-13.93%	1,640	-12.77%	3,197	-13.34%	1,471	-5.52%	1,584	-3.41%	3,055	-4.44%
Kaafu	1,425	-0.70%	1,620	-3.17%	3,045	-2.03%	1,423	-0.14%	1,544	-4.69%	2,967	-2.56%
Alifu Alifu	717	-7.84%	828	-2.47%	1,545	-5.04%	679	-5.30%	772	-6.76%	1,451	-6.08%
Alifu Dhaalu	1,263	0.32%	1,424	-1.93%	2,687	-0.89%	1,342	6.25%	1,454	2.11%	2,796	4.06%
Vaavu	229	-22.64%	274	-17.72%	503	-20.03%	211	-7.86%	261	-4.74%	472	-6.16%
Meemu	853	-10.87%	891	-12.04%	1,744	-11.47%	816	-4.34%	864	-3.03%	1,680	-3.67%
Faafu	783	7.11%	815	5.57%	1,598	6.32%	772	-1.40%	784	-3.80%	1,556	-2.63%
Dhaalu	878	2.57%	1,030	8.08%	1,908	5.47%	948	7.97%	1,011	-1.84%	1,959	2.67%
Thaa	1,755	-9.30%	1,969	-3.62%	3,724	-6.39%	1,493	-14.93%	1,683	-14.53%	3,176	-14.72%
Laamu	2,280	-1.98%	2,457	-4.02%	4,737	-3.05%	2,129	-6.62%	2,305	-6.19%	4,434	-6.40%
Gaafu Alifu	1,562	-0.26%	1,695	4.63%	3,257	2.23%	1,595	2.11%	1,711	0.94%	3,306	1.50%
Gaafu Dhaalu	2,435	-9.18%	2,484	-7.00%	4,919	-8.09%	2,122	-12.85%	2,227	-10.35%	4,349	-11.59%
Gnaviyani	1,569	-4.45%	1,591	-3.58%	3,160	-4.01%	1,556	-0.83%	1,541	-3.14%	3,097	-1.99%
Seenu	3,684	-10.19%	3,692	-9.22%	7,376	-9.71%	3,521	-4.42%	3,625	-1.81%	7,146	-3.12%
Male'	15,117	5.48%	14,190	1.54%	29,307	3.54%	15,348	1.53%	14,688	3.51%	30,036	2.49%
TOTAL	51,309	-2.17%	52,905	-1.92%	104,214	-2.05%	50,221	-2.12%	51,852	-1.99%	102,073	-2.05%

* "Change" column shows the difference over the previous year.

ދިވެހިރާއްޖޭގެ ސަރުކާރުގެ ގެޒެޓް ގައި ބަޔާންކޮށްފައިވާ ގޮތުގައި
ENROLMENT TRENDS BY MALE' AND ATOLLS
 (1999 - 2005)



ދިވެހިރާއްޖޭގެ ޖުމްހޫރިއްޔާ ގުޅިގެން
 ENROLMENT BY LEVEL AND TYPE
 (MARCH 2005)

LEVEL	Pre-Primary			Primary			Lower Secondary			Higher Secondary			Special Classes			Total			
	Female	Male	Total	Female	Male	Total	Female	Male	Total	Female	Male	Total	Female	Male	Total	Female	Male	Total	
REPUBLIC	Government	778	825	1603	26766	29329	56095	12107	11814	23921	872	965	1837	54	53	107	40577	42986	83563
	Community	3282	3481	6763	485	451	936	1280	866	2146							5047	4798	9845
	Private	2551	2588	5139	416	426	842	1586	993	2579	44	61	105				4597	4068	8665
	Total	6611	6894	13505	27667	30206	57873	14973	13673	28646	916	1026	1942	54	53	107	50144	51761	102073
MALE'	Government	48	65	113	6027	6370	12397	2825	2756	5581	682	690	1372	50	51	101	9632	9932	19564
	Community	1969	2056	4025	485	451	936	1280	866	2146								3373	7107
	Private	222	208	430	262	279	541	1454	835	2289	44	61	105				1982	1383	3365
	Total	2239	2329	4568	6774	7100	13874	5559	4457	10016	726	751	1477	50	51	101	11614	14688	30036
ATOLLS	Government	730	760	1490	20739	22959	43698	9282	9058	18340	190	275	465	4	2	6	30945	33054	63999
	Community	1313	1425	2738	0	0	0										1313	1425	2738
	Private	2329	2380	4709	154	147	301	132	158	290							2615	2685	5300
	Total	4372	4565	8937	20893	23106	43999	9414	9216	18630	190	275	465	4	2	6	34873	37164	72037

Pre-Primary: Nursery, LKG, UKG

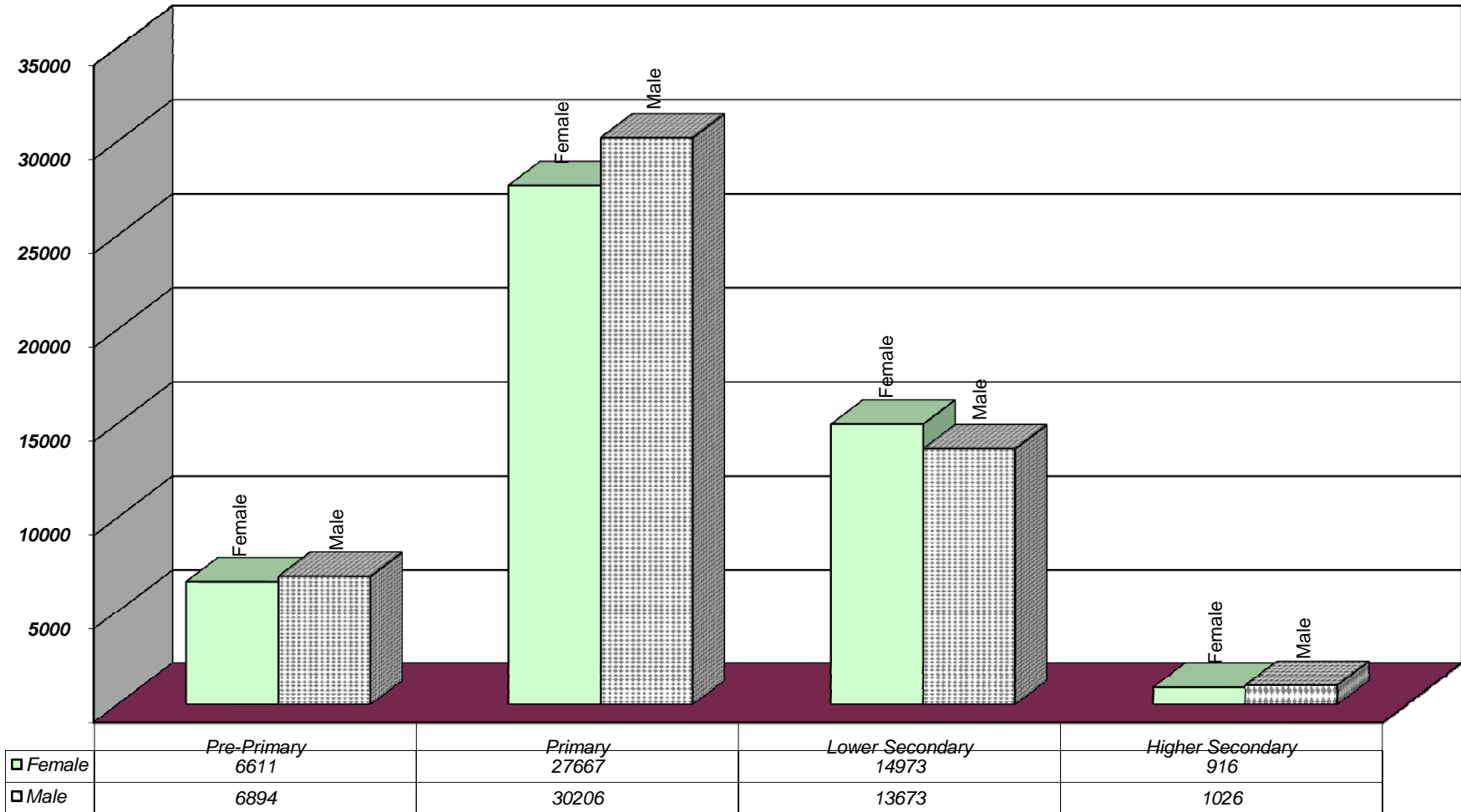
Primary: Grades 1 - 7

Lower Secondary: Grades 8 - 10

Higher Secondary: Grades 11 - 12

ދިވެހިސަރުކާރުގެ ގެޒެޓް ގައި ބަޔާންކުރި ގޮތުގައި

TOTAL STUDENT ENROLMENT IN MALDIVES BY LEVEL
(MARCH 2005)



ދިވެހިރާއްޖޭގެ ޖުމްހޫރިއްޔާއި ސަރުކާރުގެ ގެޒެޓްގައި ބަޔާންކޮށްފައިވާ ގޮތުން 2005 ވަނަ އަހަރުގެ މާރޗް ގަޑީގައި ދިވެހިރާއްޖޭގެ ސަރުކާރުގެ ގެޒެޓްގައި ބަޔާންކޮށްފައިވާ ގޮތުން

ENROLMENT IN MALE' AND ATOLLS BY GRADE AND GENDER
(MARCH 2005)

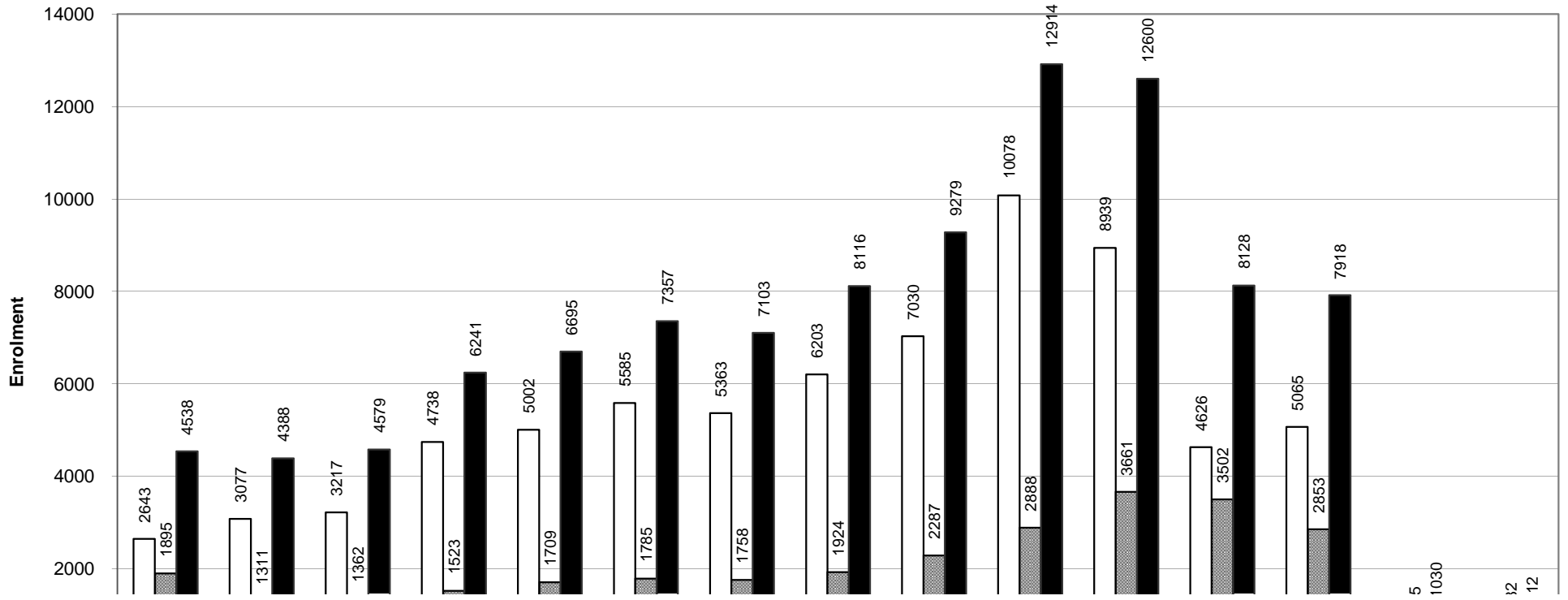
Name of Atoll	NURS		LKG		UKG		GR. 1		GR. 2		GR. 3		GR. 4		GR. 5		GR. 6		GR. 7		GR. 8		GR. 9		GR. 10		GR. 11		GR. 12		Special		SUBTOTAL		TOTAL	% National Total
	F	M	F	M	F	M	F	M	F	M	F	M	F	M	F	M	F	M	F	M	F	M	F	M	F	M	F	M	F	M	F	M	F	M		
Haa Alifu	80	81	105	112	129	138	191	159	173	190	199	220	170	183	213	243	286	330	377	432	381	388	142	135	217	165	2	17					2665	2793	5458	5.35
Haa Dhaalu	146	132	141	173	142	191	196	211	203	234	260	256	244	271	248	283	314	305	458	526	469	471	165	168	174	156	8	15	7	14			3175	3406	6581	6.45
Shaviyani	38	39	41	48	44	51	167	173	155	177	160	200	179	166	183	206	207	216	327	333	321	331	158	163	217	203	7	15					2204	2321	4525	4.43
Noonu	90	77	80	63	71	60	150	148	137	157	154	174	152	170	183	236	207	254	343	367	245	231	181	134	149	122	3	11					2145	2204	4349	4.26
Raa	120	138	144	145	134	159	216	175	206	217	208	239	232	228	227	246	287	342	380	421	401	333	213	192	203	240	2	16					2973	3091	6064	5.94
Baa	25	28	81	91	73	102	87	114	127	126	124	151	112	132	128	166	146	172	207	266	223	264	119	134	154	174	18	45	9	18			1633	1983	3616	3.54
Lhaviyani	55	64	68	92	77	76	93	78	86	111	104	127	111	107	123	136	154	170	236	270	174	188	83	78	96	77	11	10					1471	1584	3055	2.99
Kaafu	85	78	90	89	105	92	109	98	95	114	113	127	99	126	121	148	118	169	205	253	159	140	62	55	62	55							1423	1544	2967	2.91
Alifu Alifu	16	12	22	28	32	19	63	69	55	70	65	75	66	72	64	82	49	71	98	131	56	74	38	40	55	29							679	772	1451	1.42
Alifu Dhaalu	75	65	67	68	61	64	81	88	109	98	93	112	98	92	99	110	99	115	192	220	152	194	111	110	102	98	3	20					1342	1454	2796	2.74
Vaavu	2	5	3	2		1	11	15	14	14	18	21	14	26	19	16	22	26	32	40	33	38	19	30	24	27							211	261	472	0.46
Meemu	14	9	11	25	22	25	62	50	56	59	62	76	52	60	69	89	89	75	121	125	127	142	55	62	72	65			4	2			816	864	1680	1.65
Faafu	32	29	41	38	31	36	46	58	50	54	57	66	67	69	57	66	72	72	113	125	97	86	49	33	60	52							772	784	1556	1.52
Dhaalu	20	23	28	37	34	40	110	66	63	69	74	74	74	76	66	83	90	102	112	147	128	136	69	80	80	78							948	1011	1959	1.92
Thaa	23	34	46	55	50	46	99	120	104	115	124	124	135	143	135	163	138	159	189	252	223	245	111	101	116	126							1493	1683	3176	3.11
Laamu	55	46	59	64	67	76	172	167	146	157	179	188	169	174	195	218	257	267	287	367	267	289	113	128	156	158	7	6					2129	2305	4434	4.34
Gaafu Alifu	85	61	63	54	98	93	114	139	132	157	144	143	140	149	144	171	159	191	177	217	168	174	101	105	64	54	6	3					1595	1711	3306	3.24
Gaafu Dhaalu	95	114	120	104	101	102	137	165	146	146	174	191	151	179	214	204	217	218	282	308	214	223	145	140	126	133							2122	2227	4349	4.26
Gnaviyani	97	69	93	95	88	104	85	90	120	113	97	111	73	90	142	146	113	133	179	172	217	231	79	78	148	100	25	9					1556	1541	3097	3.03
Seenu	198	188	179	212	180	203	194	172	217	230	239	262	264	248	270	291	286	333	341	450	340	366	358	289	373	305	34	42	48	34			3521	3625	7146	7.00
Male'	943	952	636	675	660	702	761	762	837	872	862	923	881	877	931	993	1084	1203	1418	1470	1937	1724	1991	1511	1631	1222	343	352	383	399	50	51	15348	14688	30036	29.43
Atolls	1351	1292	1482	1595	1539	1678	2383	2355	2394	2608	2648	2937	2602	2761	2900	3303	3310	3720	4656	5422	4395	4544	2371	2255	2648	2417	126	209	64	66	4	2	34873	37164	72037	70.56
TOTAL	2294	2244	2118	2270	2199	2380	3144	3117	3231	3480	3510	3860	3483	3638	3831	4296	4394	4923	6074	6892	6332	6268	4362	3766	4279	3639	469	561	447	465	54	53	50221	51852	102073	100.00

ދިވެހިރާއްޖޭގެ ޖުމްހޫރިއްޔާ ގުޅިގެން ދިވެހިރާއްޖޭގެ ސަރުކާރުގެ ޖުމްހޫރިއްޔާ ގުޅިގެން

ENROLMENT IN MALE' AND ATOLLS BY GRADE
(MARCH 2005)

Name of Atoll	NURS	LKG	UKG	TOTAL	GR. 1	GR. 2	GR. 3	GR. 4	GR. 5	GR. 6	GR. 7	TOTAL	GR. 8	GR. 9	GR. 10	TOTAL	GR. 11	GR. 12	TOTAL	Special	TOTAL
Haa Alifu	161	217	267	645	350	363	419	353	456	616	809	3366	769	277	382	1428	19		19		5458
Haa Dhaalu	278	314	333	925	407	437	516	515	531	619	984	4009	940	333	330	1603	23	21	44		6581
Shaviyani	77	89	95	261	340	332	360	345	389	423	660	2849	652	321	420	1393	22		22		4525
Noonu	167	143	131	441	298	294	328	322	419	461	710	2832	476	315	271	1062	14		14		4349
Raa	258	289	293	840	391	423	447	460	473	629	801	3624	734	405	443	1582	18		18		6064
Baa	53	172	175	400	201	253	275	244	294	318	473	2058	487	253	328	1068	63	27	90		3616
Lhaviyani	119	160	153	432	171	197	231	218	259	324	506	1906	362	161	173	696	21		21		3055
Kaafu	163	179	197	539	207	209	240	225	269	287	458	1895	299	117	117	533					2967
Alifu Alifu	28	50	51	129	132	125	140	138	146	120	229	1030	130	78	84	292					1451
Alifu Dhaalu	140	135	125	400	169	207	205	190	209	214	412	1606	346	221	200	767	23		23		2796
Vaavu	7	5	1	13	26	28	39	40	35	48	72	288	71	49	51	171					472
Meemu	23	36	47	106	112	115	138	112	158	164	246	1045	269	117	137	523				6	1680
Faafu	61	79	67	207	104	104	123	136	123	144	238	972	183	82	112	377					1556
Dhaalu	43	65	74	182	176	132	148	150	149	192	259	1206	264	149	158	571					1959
Thaa	57	101	96	254	219	219	248	278	298	297	441	2000	468	212	242	922					3176
Laamu	101	123	143	367	339	303	367	343	413	524	654	2943	556	241	314	1111	13		13		4434
Gaafu Alifu	146	117	191	454	253	289	287	289	315	350	394	2177	342	206	118	666	9		9		3306
Gaafu Dhaalu	209	224	203	636	302	292	365	330	418	435	590	2732	437	285	259	981					4349
Gnaviyani	166	188	192	546	175	233	208	163	288	246	351	1664	448	157	248	853	34		34		3097
Seenu	386	391	383	1160	366	447	501	512	561	619	791	3797	706	647	678	2031	76	82	158		7146
Male'	1895	1311	1362	4568	1523	1709	1785	1758	1924	2287	2888	13874	3661	3502	2853	10016	695	782	1477	101	30036
TOTAL	4538	4388	4579	13505	6261	6711	7370	7121	8127	9317	12966	57873	12600	8128	7918	28646	1030	912	1942	107	102073

TOTAL ENROLMENT IN MALE' AND ATOLLS BY GRADE
(MARCH 2005)



ދިވެހިރާއްޖޭގެ ޖުމްހޫރިއްޔާ ގުޅިގެން ދިވެހިރާއްޖޭގެ ސަރުކާރު
 ENROLMENT IN MALE' AND ATOLLS BY GENDER
 (MARCH 2005)

Name of Atoll	Female	Male	Total	% Female	% Male	% Total
Haa Alifu	2665	2793	5458	48.83	51.17	5.35
Haa Dhaalu	3175	3406	6581	48.24	51.76	6.45
Shaviyani	2204	2321	4525	48.71	51.29	4.43
Noonu	2145	2204	4349	49.32	50.68	4.26
Raa	2973	3091	6064	49.03	50.97	5.94
Baa	1633	1983	3616	45.16	54.84	3.54
Lhaviyani	1471	1584	3055	48.15	51.85	2.99
Kaafu	1423	1544	2967	47.96	52.04	2.91
Alifu Alifu	679	772	1451	46.80	53.20	1.42
Alifu Dhaalu	1342	1454	2796	48.00	52.00	2.74
Vaavu	211	261	472	44.70	55.30	0.46
Meemu	816	864	1680	48.57	51.43	1.65
Faafu	772	784	1556	49.61	50.39	1.52
Dhaalu	948	1011	1959	48.39	51.61	1.92
Thaa	1493	1683	3176	47.01	52.99	3.11
Laamu	2129	2305	4434	48.02	51.98	4.34
Gaafu Alifu	1595	1711	3306	48.25	51.75	3.24
Gaafu Dhaalu	2122	2227	4349	48.79	51.21	4.26
Gnaviyani	1556	1541	3097	50.24	49.76	3.03
Seenu	3521	3625	7146	49.27	50.73	7.00
Male'	15348	14688	30036	51.10	48.90	29.43
TOTAL	50221	51852	102073	49.20	50.80	100.00

ދިވެހިރާއްޖޭގެ ސަރުކާރުގެ ގެޒެޓް ގައި ބަޔާންކޮށްފައިވާ ގޮތުގައި
 ENROLMENT IN MALE' AND ATOLLS BY GENDER
 (MARCH 2005)



SECTION: 2

ދިވެހިރާއްޖޭގެ ބޭނުން ހުށަހަޅާ ހުށަހަޅާ ދިވެހިރާއްޖޭގެ ބޭނުން ހުށަހަޅާ ހުށަހަޅާ

NUMBER OF SCHOOLS AND ENROLMENTS OF MALE' AND ATOLLS BY PROVISION
(MARCH 2005)

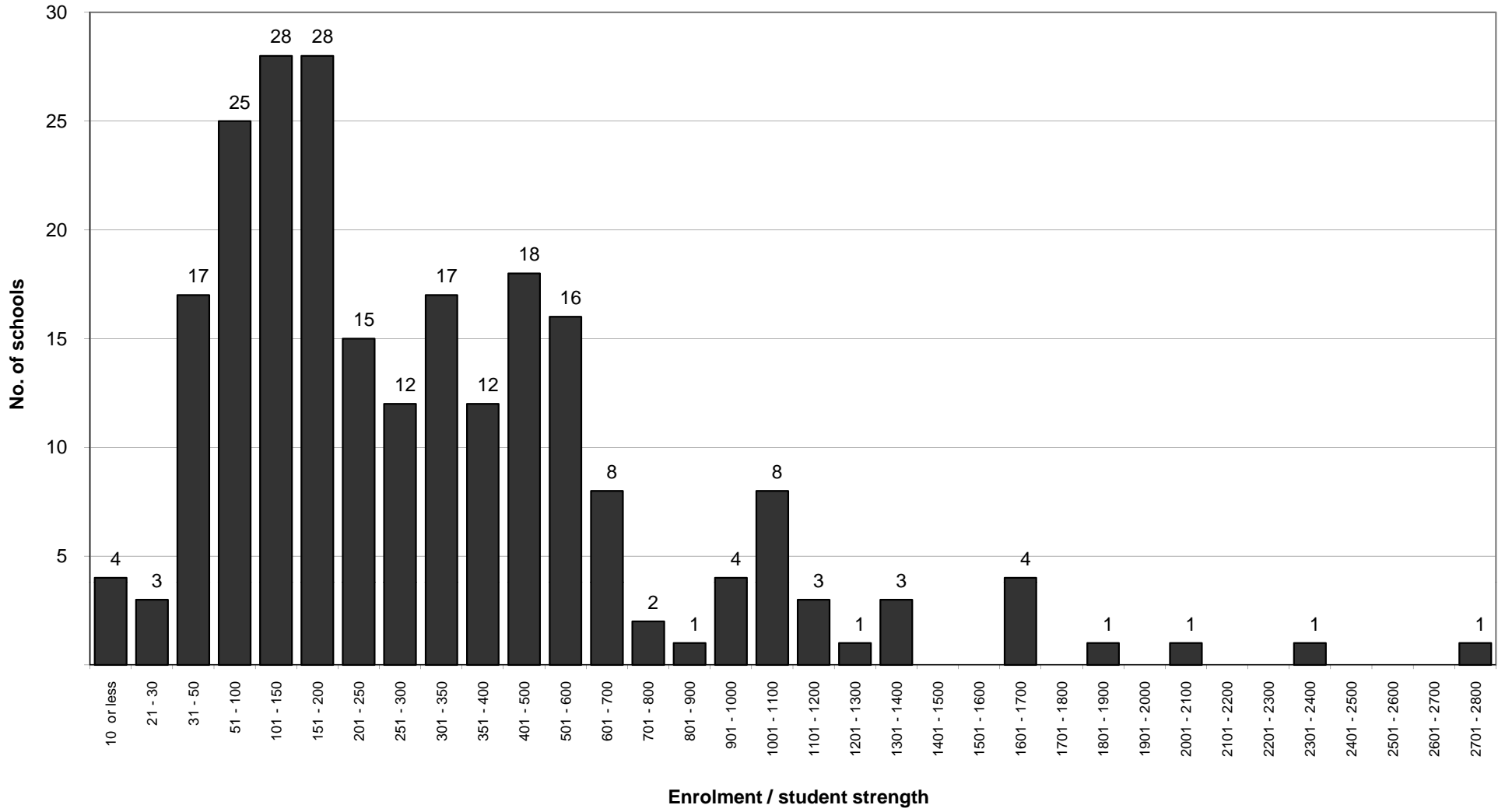
Name of Atoll	GOVERNMENT				COMMUNITY				PRIVATE				TOTAL			
	Schools	Female	Male	Total	Schools	Female	Male	Total	Schools	Female	Male	Total	Schools	Female	Male	Total
Haa Alifu	16	2402	2497	4899	4	138	147	285	5	125	149	274	25	2665	2793	5458
Haa Dhaalu	18	2841	3016	5857	1	174	226	400	6	160	164	324	25	3175	3406	6581
Shaviyani	14	2014	2128	4142	2	90	91	181	1	100	102	202	17	2204	2321	4525
Noonu	13	1904	2005	3909	5	157	135	292	3	84	64	148	21	2145	2204	4349
Raa	14	2690	2778	5468	2	112	119	231	4	171	194	365	20	2973	3091	6064
Baa	13	1504	1804	3308	1	42	54	96	3	87	125	212	17	1633	1983	3616
Lhaviyani	5	1271	1352	2623	3	144	176	320	1	56	56	112	9	1471	1584	3055
Kaafu	10	1211	1347	2558	3	95	91	186	4	117	106	223	17	1423	1544	2967
Alifu Alifu	8	618	726	1344					3	61	46	107	11	679	772	1451
Alifu Dhaalu	10	1210	1328	2538	3	132	126	258					13	1342	1454	2796
Vaavu	5	211	261	472									5	211	261	472
Meemu	8	775	811	1586					2	41	53	94	10	816	864	1680
Faafu	5	672	684	1356	2	67	63	130	1	33	37	70	8	772	784	1556
Dhaalu	7	887	933	1820	2	61	78	139					9	948	1011	1959
Thaa	12	1426	1601	3027	3	67	82	149					15	1493	1683	3176
Laamu	16	2050	2229	4279	1	18	25	43	2	61	51	112	19	2129	2305	4434
Gaafu Alifu	10	1388	1551	2939					7	207	160	367	17	1595	1711	3306
Gaafu Dhaalu	10	1766	1868	3634					13	356	359	715	23	2122	2227	4349
Gnaviyani	4	1278	1273	2551	1	16	12	28	4	262	256	518	9	1556	1541	3097
Seenu	11	2827	2862	5689					11	694	763	1457	22	3521	3625	7146
Male'	13	9632	9932	19564	4	3734	3373	7107	5	1982	1383	3365	22	15348	14688	30036
TOTAL	222	40577	42986	83563	37	5047	4798	9845	75	4597	4068	8665	334	50221	51852	102073

የኢትዮጵያ ጥቅም ስራ ሚኒስቴር
የትምህርትና የሥነ ምግባር ሚኒስቴር

FREQUENCY DISTRIBUTION OF SCHOOLS (Primary and Secondary) BY SIZE OF ENROLMENT
(MARCH 2005)

Enrolment Category	No. of Schools	Percentage	Cummulative Total	Cummulative Percentage
10 or less	4	1.72	4	1.72
11 - 20	3	1.29	7	3.00
21 - 50	17	7.30	24	10.30
51 - 100	25	10.73	49	21.03
101 - 150	28	12.02	77	33.05
151 - 200	28	12.02	105	45.06
201 - 250	15	6.44	120	51.50
251 - 300	12	5.15	132	56.65
301 - 350	17	7.30	149	63.95
351 - 400	12	5.15	161	69.10
401 - 500	18	7.73	179	76.82
501 - 600	16	6.87	195	83.69
601 - 700	8	3.43	203	87.12
701 - 800	2	0.86	205	87.98
801 - 900	1	0.43	206	88.41
901 - 1000	4	1.72	210	90.13
1001 - 1100	8	3.43	218	93.56
1101 - 1200	3	1.29	221	94.85
1201 - 1300	1	0.43	222	95.28
1301 - 1400	3	1.29	225	96.57
1401 - 1500		0.00	225	96.57
1501 - 1600		0.00	225	96.57
1601 - 1700	4	1.72	229	98.28
1701 - 1800		0.00	229	98.28
1801 - 1900	1	0.43	230	98.71
1901 - 2000		0.00	230	98.71
2001 - 2100	1	0.43	231	99.14
2101 - 2200		0.00	231	99.14
2201 - 2300		0.00	231	99.14
2301 - 2400	1	0.43	232	99.57
2401 - 2500		0.00	232	99.57
2501 - 2600		0.00	232	99.57
2601 - 2700		0.00	232	99.57
2701 - 2800	1	0.43	233	100.00
TOTAL	233	100.00		

NUMBER OF SCHOOLS (Primary and Secondary) BY SIZE OF ENROLMENT
(MARCH 2005)



የድንበይ ትምህርት ቤቶች ብዛት በደንበኞች መጠን መሰረት

FREQUENCY DISTRIBUTION OF PRE-SCHOOLS BY SIZE OF ENROLMENT
(MARCH 2005)

Enrolment Category	No. of Schools	Percentage	CummulativeTotal	Cummulative Percentage
10 or less	13	7.93	13	7.93
11 - 20	21	12.80	34	20.73
21 - 30	19	11.59	53	32.32
31 - 50	38	23.17	91	55.49
51 - 100	49	29.88	140	85.37
101 - 150	19	11.59	159	96.95
151 - 200	2	1.22	161	98.17
201 - 250	1	0.61	162	98.78
251 - 300		0.00	162	98.78
301 - 350	1	0.61	163	99.39
351 - 600	1	0.61	164	100.00
TOTAL	164	100.00		

ދިވެހިސަރުކާރުގެ ގެޒެޓް (ދާއިރާގެ ހަބަރު) ގައި ބަޔާންކުރި ގަވާއިދުގެ ދަށުން

NUMBER OF GOVERNMENT SCHOOLS AND THEIR ENROLMENTS BY MALE', ATOLLS AND LEVEL
(MARCH 2005)

Atoll	Pre-Primary				Primary				Lower Secondary				Higher Secondary			
	Enrolment				Enrolment				Enrolment				Enrolment			
	No.	Female	Male	Total	No.	Female	Male	Total	No.	Female	Male	Total	No.	Female	Male	Total
Haa Alifu	5	51	35	86	16	1609	1757	3366	6	740	688	1428	1	2	17	19
Haa Dhaalu	10	95	106	201	17	1923	2086	4009	8	808	795	1603	1	15	29	44
Shaviyani	2	24	33	57	14	1317	1411	2728	13	666	669	1335	1	7	15	22
Noonu	1		1	1	13	1326	1506	2832	9	575	487	1062	1	3	11	14
Raa	7	115	129	244	14	1756	1868	3624	10	817	765	1582	1	2	16	18
Baa	6	50	42	92	13	931	1127	2058	7	496	572	1068	2	27	63	90
Lhaviyani					5	907	999	1906	3	353	343	696	1	11	10	21
Kaafu	4	68	62	130	10	860	1035	1895	6	283	250	533				
Alifu Alifu	1	9	13	22	8	460	570	1030	3	149	143	292				
Alifu Dhaalu	4	71	71	142	10	771	835	1606	7	365	402	767	1	3	20	23
Vaavu	2	5	8	13	5	130	158	288	3	76	95	171				
Meemu	1	6	6	12	8	511	534	1045	5	254	269	523				
Faafu	1	4	3	7	5	462	510	972	4	206	171	377				
Dhaalu	2	21	22	43	7	589	617	1206	6	277	294	571				
Thaa	4	52	53	105	12	924	1076	2000	9	450	472	922				
Laamu	6	102	110	212	16	1405	1538	2943	9	536	575	1111	1	7	6	13
Gaafu Alifu	2	39	48	87	10	1010	1167	2177	7	333	333	666	1	6	3	9
Gaafu Dhaalu	1	18	18	36	10	1290	1392	2682	5	458	458	916				
Gnaviyani					4	809	855	1664	1	444	409	853	1	25	9	34
Seenu					9	1749	1918	3667	5	996	868	1864	1	82	76	158
Male'	1	48	65	113	9	6027	6370	12397	5	2825	2756	5581	1	682	690	1372
TOTAL	60	778	825	1603	215	26766	29329	56095	131	12107	11814	23921	14	872	965	1837

*Note: 1. Sum of schools in this table does not add up to the total number of schools as schools overlap in levels
2. Pre-Primary grades in the government schools are run by the community except in Hulhumale schools*

(2005 මාර්ଚ්) ජනපද පාසල සංඛ්‍යාව සහ ඒවායේ පිරිමින්ගේ සාහසිකයන් මට්ටම මගින්

NUMBER OF COMMUNITY SCHOOLS AND THEIR ENROLMENTS BY MALE', ATOLLS AND LEVEL
(MARCH 2005)

COMMUNITY SCHOOLS

Atoll	Pre-Primary Enrolment				Primary Enrolment				Lower Secondary Enrolment				Higher Secondary Enrolment			
	No.	Female	Male	Total	No.	Female	Male	Total	No.	Female	Male	Total	No.	Female	Male	Total
Haa Alifu	4	138	147	285												
Haa Dhaalu	1	174	226	400												
Shaviyani	2	90	91	181												
Noonu	5	157	135	292												
Raa	2	112	119	231												
Baa	1	42	54	96												
Lhaviyani	3	144	176	320												
Kaafu	3	95	91	186												
Alifu Alifu																
Alifu Dhaalu	3	132	126	258												
Vaavu																
Meemu																
Faafu	2	67	63	130												
Dhaalu	2	61	78	139												
Thaa	3	67	82	149												
Laamu	1	18	25	43												
Gaafu Alifu																
Gaafu Dhaalu																
Gnaviyani	1	16	12	28												
Seenu																
Male'	4	1969	2056	4025	4	485	451	936	4	1280	866	2146				
TOTAL	37	3282	3481	6763	4	485	451	936	4	1280	866	2146				

Note: Sum of schools in this table does not add up to the total number of schools as schools overlap in levels

ދިވެހިސަރުކާރުގެ ގެޒެޓްގައި ބަޔާންކުރި ފަރާތްތަކުގެ ނިންމުމެއްގައި ވާނެއެވެ.

NUMBER OF PRIVATE SCHOOLS AND ENROLMENTS BY MALE', ATOLLS AND LEVEL
(MARCH 2005)

Atoll	PRIVATE SCHOOLS															
	Pre-Primary Enrolment				Primary Enrolment				Lower Secondary Enrolment				Higher Secondary Enrolment			
	No.	Female	Male	Total	No.	Female	Male	Total	No.	Female	Male	Total	No.	Female	Male	Total
Haa Alifu	5	125	149	274												
Haa Dhaalu	6	160	164	324												
Shaviyani	1	9	14	23	1	61	60	121	1	30	28	58				
Noonu	3	84	64	148												
Raa	4	171	194	365												
Baa	3	87	125	212												
Lhaviyani	1	56	56	112												
Kaafu	4	117	106	223												
Alifu Alifu	3	61	46	107												
Alifu Dhaalu																
Vaavu																
Meemu	2	41	53	94												
Faafu	1	33	37	70												
Dhaalu																
Thaa																
Laamu	2	61	51	112												
Gaafu Alifu	7	207	160	367												
Gaafu Dhaalu	12	298	302	600	1	31	19	50	1	27	38	65				
Gnaviyani	4	262	256	518												
Seenu	10	557	603	1160	1	62	68	130	1	75	92	167				
Male'	3	222	208	430	3	262	279	541	3	1454	835	2289	1	44	61	105
TOTAL	71	2551	2588	5139	6	416	426	842	6	1586	993	2579	1	44	61	105

Note: Sum of schools in this table does not add up to the total number of schools as schools overlap in levels

ދިވެހިސަރުކާރުގެ ގެޒެޓް (ދިވެހިރާއްޖޭގެ ވާރީ 2005)

NUMBER OF SCHOOLS AND ENROLMENT BY MALE', ATOLLS AND LEVEL
(MARCH 2005)

GOVERNMENT, COMMUNITY AND PRIVATE SCHOOLS

Atoll	Pre-Primary				Primary				Lower Secondary				Higher Secondary			
	Enrolment				Enrolment				Enrolment				Enrolment			
	No.	Female	Male	Total	No.	Female	Male	Total	No.	Female	Male	Total	No.	Female	Male	Total
Haa Alifu	14	314	331	645	16	1609	1757	3366	6	740	688	1428	1	2	17	19
Haa Dhaalu	17	429	496	925	17	1923	2086	4009	8	808	795	1603	1	15	29	44
Shaviyani	5	123	138	261	15	1378	1471	2849	14	696	697	1393	1	7	15	22
Noonu	9	241	200	441	13	1326	1506	2832	9	575	487	1062	1	3	11	14
Raa	13	398	442	840	14	1756	1868	3624	10	817	765	1582	1	2	16	18
Baa	10	179	221	400	13	931	1127	2058	7	496	572	1068	2	27	63	90
Lhaviyani	4	200	232	432	5	907	999	1906	3	353	343	696	1	11	10	21
Kaafu	11	280	259	539	10	860	1035	1895	6	283	250	533				
Alifu Alifu	4	70	59	129	8	460	570	1030	3	149	143	292				
Alifu Dhaalu	7	203	197	400	10	771	835	1606	7	365	402	767	1	3	20	23
Vaavu	2	5	8	13	5	130	158	288	3	76	95	171				
Meemu	3	47	59	106	8	511	534	1045	5	254	269	523				
Faafu	4	104	103	207	5	462	510	972	4	206	171	377				
Dhaalu	4	82	100	182	7	589	617	1206	6	277	294	571				
Thaa	7	119	135	254	12	924	1076	2000	9	450	472	922				
Laamu	9	181	186	367	16	1405	1538	2943	9	536	575	1111	1	7	6	13
Gaafu Alifu	9	246	208	454	10	1010	1167	2177	7	333	333	666	1	6	3	9
Gaafu Dhaalu	13	316	320	636	11	1321	1411	2732	6	485	496	981				
Gnaviyani	5	278	268	546	4	809	855	1664	1	444	409	853	1	25	9	34
Seenu	10	557	603	1160	10	1811	1986	3797	6	1071	960	2031	1	82	76	158
Male'	8	2239	2329	4568	16	6774	7100	13874	12	5559	4457	10016	2	726	751	1477
TOTAL	168	6611	6894	13505	225	27667	30206	57873	141	14973	13673	28646	15	916	1026	1942

Note: Sum of schools in this table does not add up to the total number of schools as schools overlap in levels

SECTION: 3

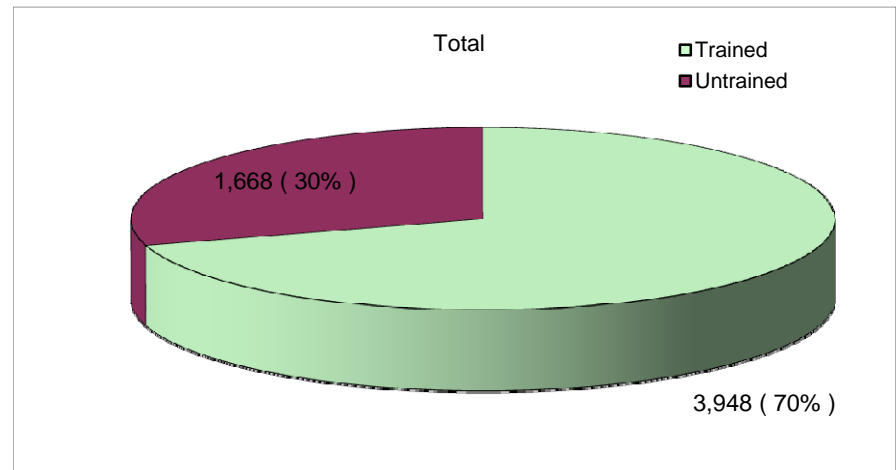
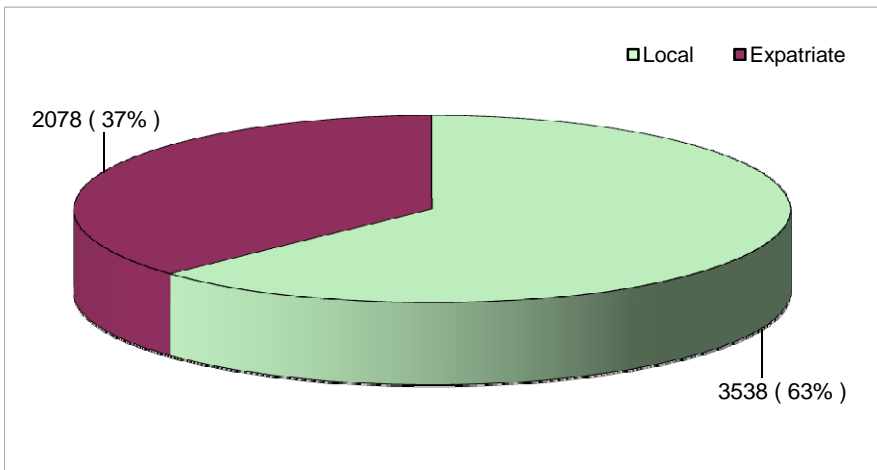
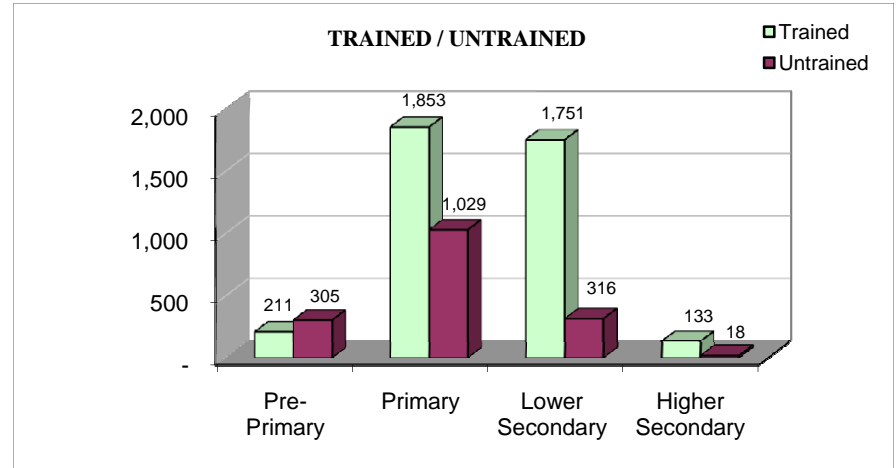
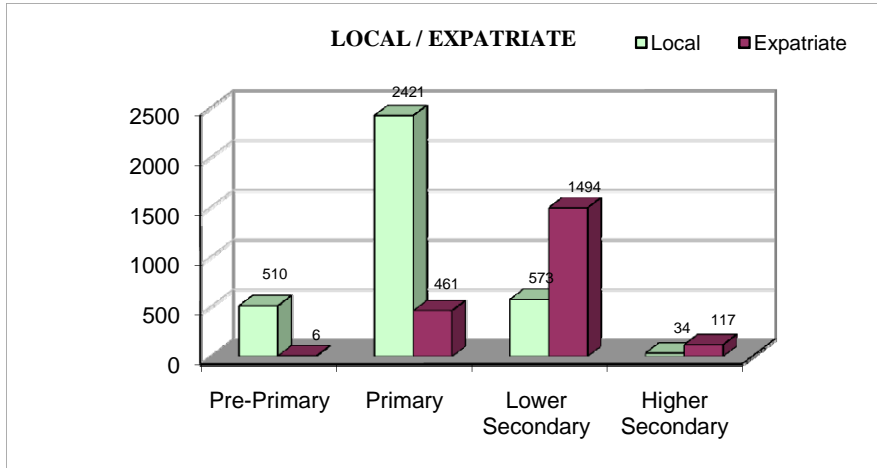
ދިވެހިރާއްޖޭގެ ޖުމްހޫރިއްޔާ ގުޅިގެން ދިވެހިރާއްޖޭގެ ސަރުކާރުގެ ޖުމްހޫރިއްޔާ ގުޅިގެން
TEACHERS SERVING AT DIFFERENT LEVELS, BY JOB CATEGORIES
(MARCH 2005)

	Trained																Trained Total	Permanent Untrained				Permanent Untrained Total	Temporary				Temporary Untrained Total	Untrained Total	Local		Expat		Total No. of Teachers	* Total No. of Students	Student Teacher Ratio
	Graduate								Non-Graduate									Local		Expat															
	With teaching qualification				No teaching qualification				Local				Expat					Local		Expat															
	Local		Expat		Local		Expat		Local		Expat		Local		Expat			Local		Expat															
	F	M	F	M	F	M	F	M	F	M	F	M	F	M	F	M		F	M	F	M		F	M	F	M									
Republic																																			
Pre-Primary	-	-	-	1	-	-	1	-	2	197	10	2	-	211	175	3	2	-	180	113	12	-	-	125	305	485	25	5	1	516	13,505	26			
Primary (Grades 1 - 7)	3	-	104	92	1	8	42	56	306	1,038	401	77	31	1,853	191	149	17	23	380	432	198	4	15	649	1,029	1,665	756	244	217	2,882	57,873	20			
Lower Secondary (Grades 8 - 10)	20	21	223	419	8	33	137	319	1,180	194	149	83	145	1,751	20	32	14	71	137	27	69	22	61	179	316	269	304	479	1,015	2,067	28,646	14			
Higher Secondary (Grades 11 - 12)	4	7	22	65	-	4	1	6	109	6	13	3	2	133	-	-	-	-	-	-	-	5	13	18	18	10	24	31	86	151	1,942	13			
Subtotals by Sex	27	28	349	577	9	45	181	381	1,597	1,435	573	165	178	3,948	386	184	33	94	697	572	279	31	89	971	1,668	2,429	1,109	759	1,319	5,616	101,966	18			
Atoll																																			
Pre-Primary	-	-	-	1	-	-	1	-	2	83	10	-	-	95	129	3	1	-	133	106	10	-	-	116	249	318	23	2	1	344	8,937	26			
Primary (Grades 1 - 7)	2	-	76	84	1	4	38	49	254	696	349	25	25	1,349	176	142	14	23	355	408	185	1	11	605	960	1,283	680	154	192	2,309	43,999	19			
Lower Secondary (Grades 8 - 10)	8	10	132	309	2	17	105	250	833	89	109	43	83	1,157	17	30	14	64	125	21	20	5	31	77	202	137	186	299	737	1,359	18,630	14			
Higher Secondary (Grades 11 - 12)	-	-	5	24	-	3	-	4	36	5	9	2	2	54	-	-	-	-	-	-	-	4	11	15	15	5	12	11	41	69	465	7			
Subtotals by Sex	10	10	213	418	3	24	144	303	1,125	873	477	70	110	2,655	322	175	29	87	613	535	215	10	53	813	1,426	1,743	901	466	971	4,081	72,031	18			
Male'																																			
Pre-Primary	-	-	-	-	-	-	-	-	-	114	-	2	-	116	46	-	1	-	47	7	2	-	-	9	56	167	2	3	-	172	4,568	27			
Primary (Grades 1 - 7)	1	-	28	8	-	4	4	7	52	342	52	52	6	504	15	7	3	-	25	24	13	3	4	44	69	382	76	90	25	573	13,874	24			
Lower Secondary (Grades 8 - 10)	12	11	91	110	6	16	32	69	347	105	40	40	62	594	3	2	-	7	12	6	49	17	30	102	114	132	118	180	278	708	10,016	14			
Higher Secondary (Grades 11 - 12)	4	7	17	41	-	1	1	2	73	1	4	1	-	79	-	-	-	-	-	-	-	1	2	3	3	5	12	20	45	82	1,477	18			
Subtotals by Sex	17	18	136	159	6	21	37	78	472	562	96	95	68	1,293	64	9	4	7	84	37	64	21	36	158	242	686	208	293	348	1,535	29,935	20			
Grand Total	27	28	349	577	9	45	181	381	1,597	1,435	573	165	178	3,948	386	184	33	94	697	572	279	31	89	971	1,668	2,429	1,109	759	1,319	5,616	101,966	18			

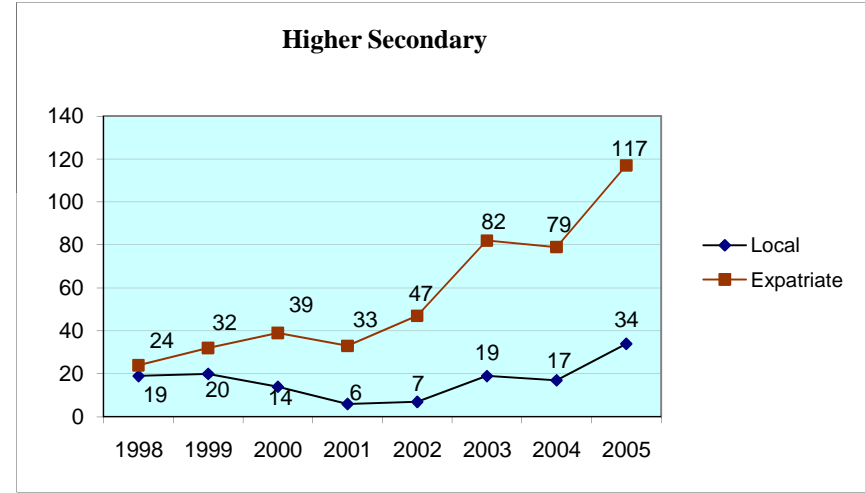
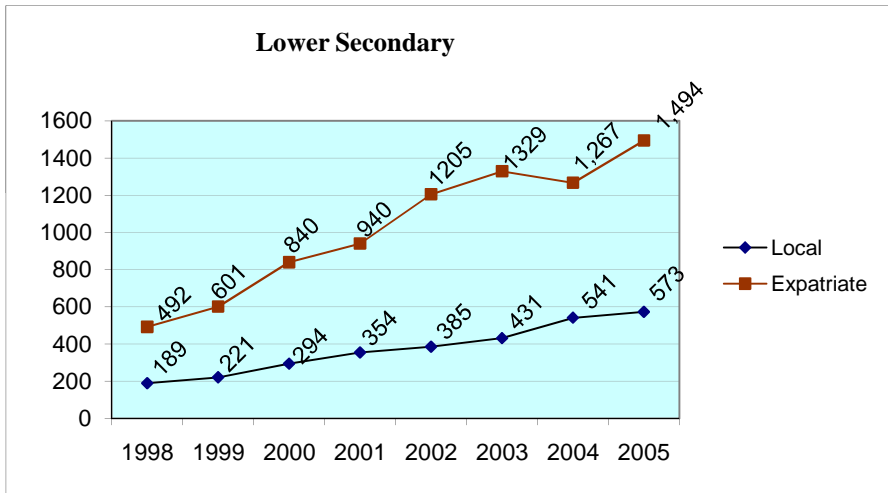
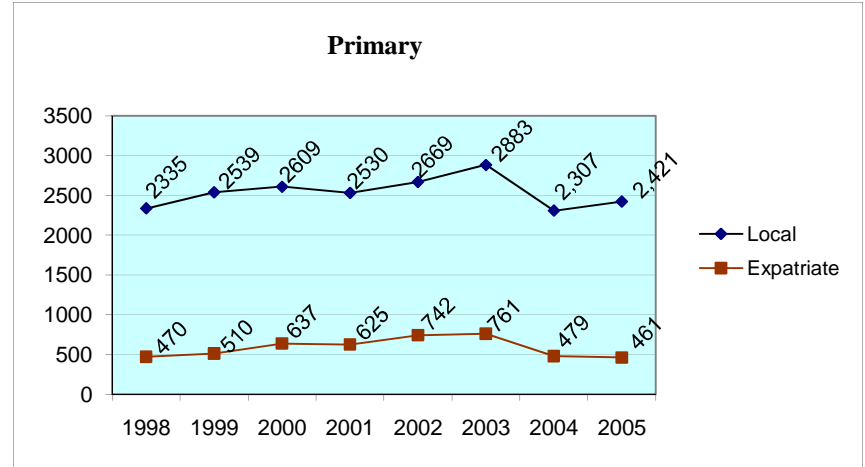
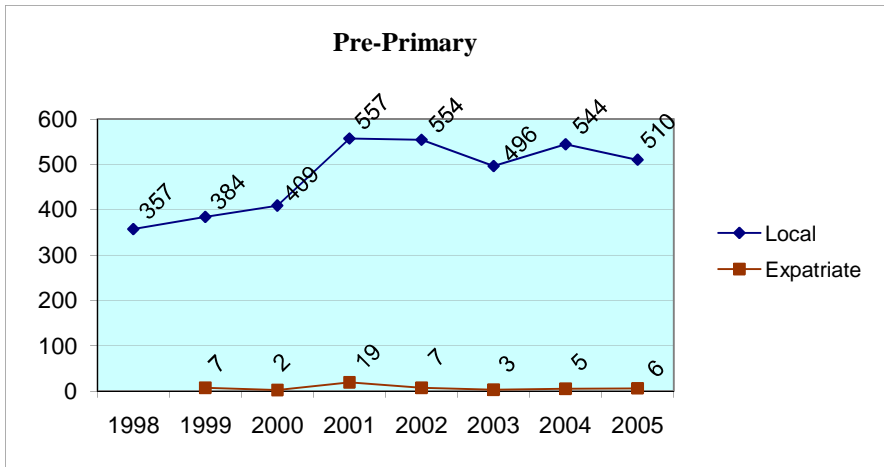
Note : 1. This table does not include supervisors, assistant headmasters, headmasters, assistant principals and principals who may teach in addition to their administrative duties.
 2. Schools overlap in levels. Overlapping teachers have been enumerated in the level the teacher takes most periods.
 3. Trained : Have MAB (Maldives Accreditation Board) accredited advanced certificate or higher teaching qualification.
 4. Total number of students in this table does not include children with disabilities.

تعداد معلمات و معلمي التعليم في مختلف المستويات

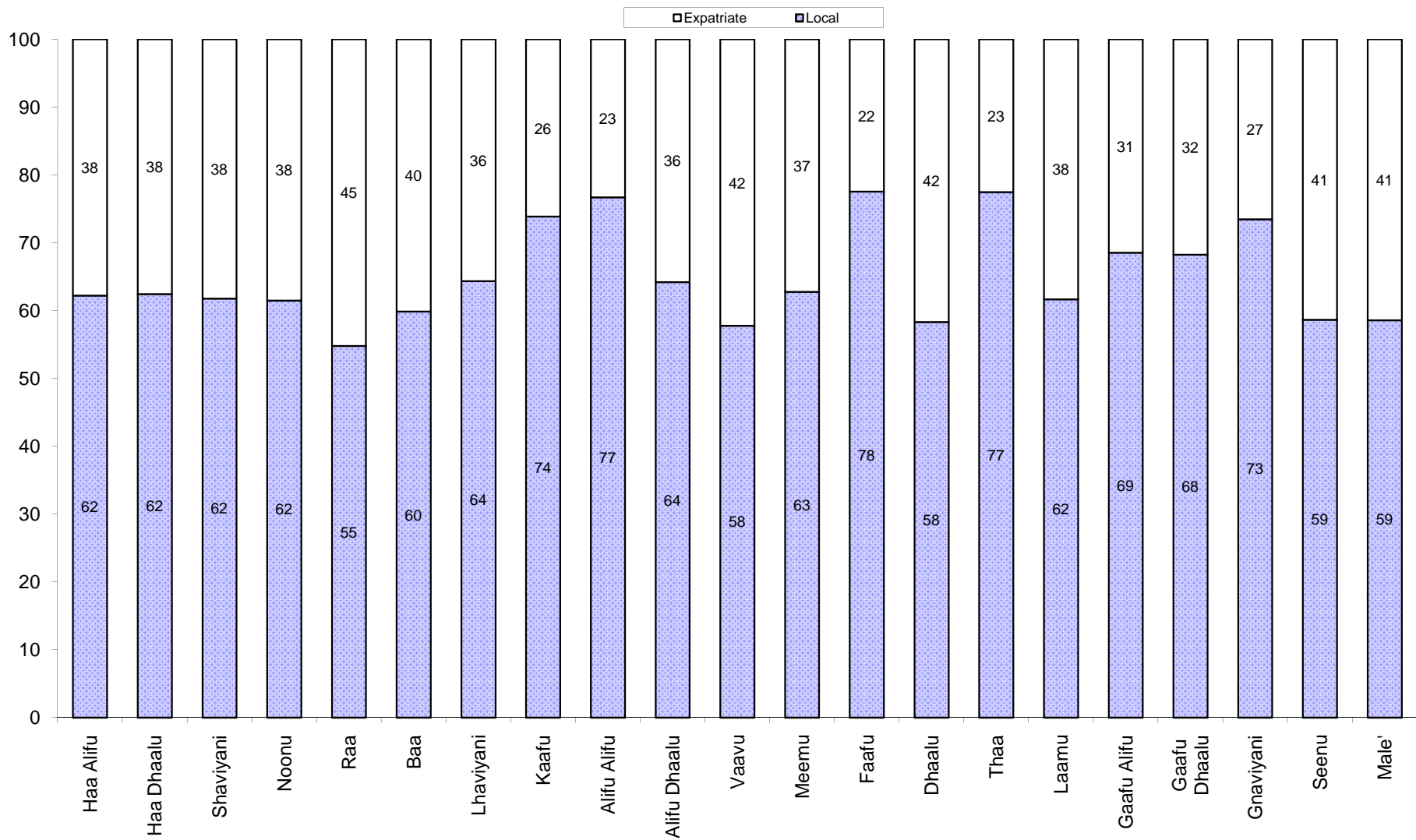
TEACHERS SERVING AT DIFFERENT LEVELS
(MARCH 2005)



(بھارتی اور غیر بھارتی) اساتذہ کی رجحان کا جائزہ
 TEACHERS' TREND (LOCAL AND EXPATRIATE)
 1998 - 2005



PERCENTAGE OF TEACHERS SERVING IN MALE' AND ATOLLS (LOCAL / EXPATRIATE)



ދިވެހިރާއްޖޭގެ ޖުމްހޫރިއްޔާ ގުޅިގެން ދިވެހިރާއްޖޭގެ ސަރުކާރުގެ ޖުމްހޫރިއްޔާ ގުޅިގެން

TEACHERS SERVING IN MALE' AND ATOLLS BY JOB CATEGORIES
(MARCH 2005)

Locality	Trained													Trained Total	Permanent Untrained				Permanent Untrained Total	Temporary				Temporary Untrained Total	Untrained Total	Local		Expatriate		Total No. of Teachers	Total No. of Students	Student Teacher Ratio (STR)
	Graduate								Non-Graduate						Temporary					Local		Expatriate										
	With teaching qualification				No teaching qualification				Local		Expatriate				Local		Expatriate			Local		Expatriate										
	Local		Expatriate		Local		Expatriate		Local		Expatriate				Local		Expatriate			Local		Expatriate										
	F	M	F	M	F	M	F	M	F	M	F	M	F		M	F	M	F		M	F	M	F			M	F	M				
Republic	27	28	349	577	9	45	181	381	1,597	1,435	573	165	178	3,948	386	184	33	94	697	572	279	31	89	971	1,668	2,429	1,109	759	1,319	5,616	102,073	18
Male'	13	15	115	135	6	16	26	55	381	499	90	88	60	1,118	42	7	3	3	55	20	54	20	34	128	183	580	182	252	287	1,301	30,036	23
Atolls	14	13	234	442	3	29	155	326	1,216	936	483	77	118	2,830	344	177	30	91	642	552	225	11	55	843	1,485	1,849	927	507	1,032	4,315	72,037	17
Haa Alifu	-	-	17	19	-	-	25	35	96	83	41	3	11	234	24	16	7	19	66	46	14	-	-	60	126	153	71	52	84	360	5,458	15
Haa Dhaalu	1	1	31	43	-	-	16	17	109	100	49	6	10	274	19	5	2	7	33	39	7	1	-	47	80	159	62	56	77	354	6,581	19
Shaviyani	-	-	11	34	-	6	7	21	79	33	58	8	21	199	15	20	-	4	39	22	27	1	5	55	94	70	111	27	85	293	4,525	15
Noonu	-	-	3	10	-	1	16	26	56	59	28	12	8	163	14	6	1	4	25	14	9	-	2	25	50	87	44	32	50	213	4,349	20
Raa	-	-	18	39	-	-	15	56	128	31	28	1	1	189	27	18	1	9	55	52	15	-	1	68	123	110	61	35	106	312	6,064	19
Baa	-	-	19	28	1	1	15	28	92	79	45	3	9	228	14	8	3	8	33	22	3	-	3	28	61	116	57	40	76	289	3,616	13
Lhaviyani	2	2	13	35	-	-	3	8	63	53	15	4	3	138	16	8	1	-	25	20	5	-	-	25	50	91	30	21	46	188	3,055	16
Kaafu	-	1	7	10	-	-	4	5	27	33	26	9	7	102	22	7	1	-	30	31	10	-	3	44	74	86	44	21	25	176	2,967	17
Alifu Alifu	2	1	3	9	-	-	4	5	24	12	12	-	2	50	11	6	1	-	18	28	7	-	-	35	53	53	26	8	16	103	1,451	14
Alifu Dhaalu	-	1	8	15	-	-	6	14	44	42	11	3	3	103	9	2	1	5	17	37	11	2	6	56	73	88	25	20	43	176	2,796	16
Vaavu	-	1	-	6	-	-	2	4	13	7	2	-	-	22	6	-	2	3	11	9	1	-	2	12	23	22	4	4	15	45	472	10
Meemu	-	-	4	4	1	1	11	16	37	18	10	-	-	65	12	8	3	7	30	17	14	-	3	34	64	48	33	18	30	129	1,680	13
Faafu	-	-	-	-	1	8	4	9	22	15	13	4	5	59	9	6	-	-	15	16	8	-	-	24	39	41	35	8	14	98	1,556	16
Dhaalu	2	-	5	12	-	3	2	9	33	22	10	3	6	74	8	1	-	1	10	9	8	-	7	24	34	41	22	10	35	108	1,959	18
Thaa	-	1	6	22	-	2	2	3	36	28	30	-	2	96	32	24	1	6	63	30	18	-	6	54	117	90	75	9	39	213	3,176	15
Laamu	-	-	18	38	-	1	8	25	90	27	28	3	6	154	18	14	-	5	37	48	33	1	1	83	120	93	76	30	75	274	4,434	16
Gaafu Alifu	-	-	17	23	-	-	2	12	54	42	19	1	2	118	8	15	1	-	24	36	13	1	2	52	76	86	47	22	39	194	3,306	17
Gaafu Dhaalu	3	1	21	44	-	1	1	4	75	60	25	2	6	168	42	7	2	1	52	27	8	-	-	35	87	132	42	26	55	255	4,349	17
Gnaviyani	-	-	8	25	-	-	-	-	33	87	24	3	3	150	9	1	-	1	11	30	4	4	12	50	61	126	29	15	41	211	3,097	15
Seenu	4	4	25	26	-	5	12	29	105	105	9	12	13	244	29	5	3	11	48	19	10	1	2	32	80	157	33	53	81	324	7,146	22

Note: 1. This table does not include supervisors, assistant headmasters, headmasters, assistant principals and principals who may teach in addition to their administrative duties.
2. This table includes pre-primary teachers.

(2005 3 1) 2005 3 1 2005 3 1 2005 3 1 2005 3 1
SCHOOLS, ENROLMENT AND TEACHERS BY MALE' AND ATOLLS
(MARCH 2005)

Locality	Schools		Students	Teachers			Student Teacher Ratio (Trained Teachers)
	Enrol. Less than 500	Enrol. Greater than or equal to 500	(Both Sexes)	Total	Trained	Untrained	
Republic	280	54	102,073	5,616	3,332	2,284	30.63
Male'	5	17	30,036	1,301	1,015	286	29.59
Atolls	275	37	72,037	4,315	2,317	1,998	31.09
Haa Alifu	22	3	5,458	360	174	186	31.37
Haa Dhaalu	22	3	6,581	354	241	113	27.31
Shaviyani	15	2	4,525	293	165	128	27.42
Noonu	18	3	4,349	213	120	93	36.24
Raa	14	6	6,064	312	118	194	51.39
Baa	15	2	3,616	289	183	106	19.76
Lhaviyani	7	2	3,055	188	127	61	24.06
Kaafu	16	1	2,967	176	93	83	31.90
Alifu Alifu	11		1,451	103	41	62	35.39
Alifu Dhaalu	11	2	2,796	176	83	93	33.69
Vaavu	5		472	45	16	29	29.50
Meemu	10		1,680	129	36	93	46.67
Faafu	8		1,556	98	37	61	42.05
Dhaalu	9		1,959	108	60	48	32.33
Thaa	14	1	3,176	213	89	124	35.45
Laamu	17	2	4,434	274	120	154	36.95
Gaafu Alifu	16	1	3,306	194	104	90	31.79
Gaafu Dhaalu	21	2	4,349	255	162	93	26.85
Gnaviyani	6	3	3,097	211	150	61	20.65
Seenu	18	4	7,146	324	198	126	36.09

Note: 1. This table does not include supervisors, assistant headmasters, headmasters, assistant principals and principals who may teach in addition to their administrative duties.

2. This table includes pre-primary teachers.

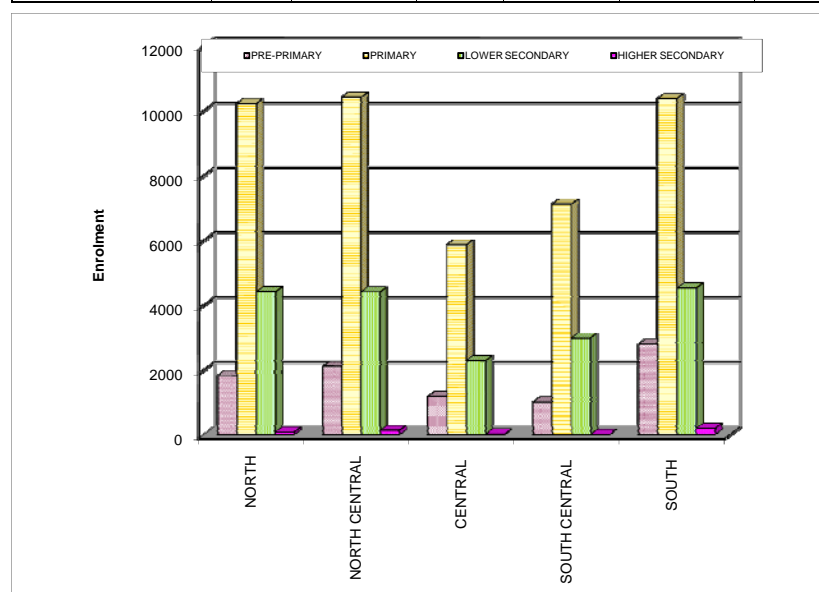
SECTION: 4

ދިވެހިރާއްޖޭގެ ޖުމްހޫރިއްޔާ ގުޅިގެން

STUDENT- ENROLMENT BY ATOLLS, ZONES AND LEVEL
(MARCH 2005)

ATOLL	SPECIAL	PRE-PRIMARY	PRIMARY	LOWER SECONDARY	HIGHER SECONDARY	TOTAL
HAA ALIFU		645	3366	1428	19	5458
HAA DHAALU		925	4009	1603	44	6581
SHAVIYANI		261	2849	1393	22	4525
NOONU		441	2832	1062	14	4349
RAA		840	3624	1582	18	6064
BAA		400	2058	1068	90	3616
LHAVIYANI		432	1906	696	21	3055
KAAFU		539	1895	533		2967
ALIFU ALIFU		129	1030	292		1451
ALIFU DHAALU		400	1606	767	23	2796
VAAVU		13	288	171		472
MEEMU	6	106	1045	523		1680
FAAFU		207	972	377		1556
DHAALU		182	1206	571		1959
THAA		254	2000	922		3176
LAAMU		367	2943	1111	13	4434
GAAFU ALIFU		454	2177	666	9	3306
GAAFU DHAALU		636	2732	981		4349
GNAVINYANI		546	1664	853	34	3097
SEENU		1160	3797	2031	158	7146
MALE'	101	4568	13874	10016	1477	30036
REPUBLIC	107	13505	57873	28646	1942	102073

ZONE	SPECIAL	PRE-PRIMARY	PRIMARY	LOWER SECONDARY	HIGHER SECONDARY	TOTAL
NORTH ZONE		1831	10224	4424	85	16564
NORTH CENTRAL ZONE		2113	10420	4408	143	17084
CENTRAL ZONE	6	1187	5864	2286	23	9366
SOUTH CENTRAL ZONE		1010	7121	2981	13	11125
SOUTH ZONE		2796	10370	4531	201	17898
MALE' ZONE	101	4568	13874	10016	1477	30036
REPUBLIC	107	13505	57873	28646	1942	102073



ދިވެހިރާއްޖޭގެ ޖުމްހޫރިއްޔާ ގުޅިގެން

STUDENT ENROLMENT BY ATOLLS, ISLANDS AND LEVEL
(MARCH 2005)

ATOLL	ISLAND	PRE.	PRIM.	SECON.	H.SECON.	TOTAL
HAA ALIFU	IHAVANDHOO	87	679	342	19	1127
	DHIDHDHOO	139	566	443		1148
	HOARAFUSHI	93	563	348		1004
	KELAA	88	299	180		567
	BAARAH	58	344	82		484
	UTHEEM		135	33		168
	VASHAFARU	48	145			193
	FILLADHOO	49	121			170
	MURADHOO		119			119
	MAARANDHOO		101			101
	THURAAKUNU	18	82			100
	THAKANDHOO	45	80			125
	ULIGAMU		75			75
	MOLHADHOO	10	28			38
	HATHIFUSHI	7	23			30
	BERINMADHOO	3	6			9
ATOLL TOTAL		645	3366	1428	19	5458

ATOLL	ISLAND	PRE.	PRIM.	SECON.	H.SECON.	TOTAL
HAA DHAALU	KULHUDUFFUSHI	400	1705	868	44	3017
	VAIKARADHOO	74	248	167		489
	HANIMAADHOO	97	254	147		498
	NEYKURENDHOO	41	240	139		420
	MAKUNUDHOO	65	237	111		413
	NOLHIVARAM		412	104		516
	NELLAIDHOO	34	191	48		273
	KUMUNDHOO	67	282	19		368
	NAIVAADHOO	32	105			137
	KURIN'BEE	29	95			124
	NOLHIVARANFARU	15	68			83
	FINEY	24	67			91
	HIRIMARADHOO	15	56			71
	MAVAIDHOO	17	32			49
	FARIDHOO	11	12			23
	KUN'BURUDHOO	4	5			9
ATOLL TOTAL		925	4009	1603	44	6581

ATOLL	ISLAND	PRE.	PRIM.	SECON.	H.SECON.	TOTAL
SHAVIYANI	KOMANDOO	88	260	229	22	599
	KAN'DITHEEM		287	219		506
	MILANDHOO	93	304	184		581
	FUNADHOO		342	155		497
	FOAKAIDHOO		285	142		427
	MAAUN'GOODHOO		187	115		302
	FEEVAH		201	80		281
	MAROSHI	23	121	58		202
	LHAIMAGU	35	137	49		221
	NOOMARA		118	45		163
	GOIDHOO		130	32		162
	FEYDHOO		168	31		199
	NARUDHOO	22	120	29		171
	BILEHFAHI		128	25		153
	MAAKAN'DOODHOO		61			61
	ATOLL TOTAL		261	2849	1393	22

ATOLL	ISLAND	PRE.	PRIM.	SECON.	H.SECON.	TOTAL	
NOONU	VELIDHOO	91	352	197	14	654	
	HOLHUDHOO	70	363	274		707	
	MANADHOO		251	195		446	
	KEN'DHIKULHUDHOO	31	352	188		571	
	MILADHOO		257	54		311	
	MAAFARU	80	251	54		385	
	KUDAFAREE	34	109	43		186	
	LANDHOO	108	285	29		422	
	LHOHI		150	28		178	
	MAALHENDHOO		276			276	
	HEN'BADHOO	27	115			142	
	FODHDHOO		46			46	
	MAGOODHOO		25			25	
	ATOLL TOTAL		441	2832	1062	14	4349

ދިވެހިސަރުކާރުގެ ގެޒެޓްގައި ބަޔާންކޮށްފައިވާ ގޮތުން

STUDENT ENROLMENT BY ATOLLS, ISLANDS AND LEVEL
(MARCH 2005)

ATOLL	ISLAND	PRE.	PRIM.	SECON.	H.SECON.	TOTAL
RAA	ALIFUSHI	129	517	240	18	904
	UN'GOOFAARU	169	624	319		1112
	MEEDHOO	102	412	242		756
	HULHUDHUHFAARU	109	434	240		783
	IN'GURADHOO	77	324	192		593
	MADUVVAREE	87	365	136		588
	MAAKURATH	24	255	116		395
	RASMAADHOO	34	107	53		194
	INNAMAADHOO	40	128	39		207
	RASGATHEEM	48	134	5		187
	AN'GOLHITHEEM	6	87			93
	VAADHOO		87			87
	KINOLHAS		86			86
	FAINU	15	64			79
	KANDHOLHUDHOO *					
ATOLL TOTAL		840	3624	1582	18	6064

ATOLL	ISLAND	PRE.	PRIM.	SECON.	H.SECON.	TOTAL
BAA	EYDHAFUSHI	96	556	409	71	1132
	THULHAADHOO	141	418	251	19	829
	KENDHOO	71	206	139		416
	HITHAADHOO		170	104		274
	DHARAVANDHOO		210	100		310
	KUDARIKILU	17	94	40		151
	GOIDHOO	22	152	25		199
	DHONFANU	12	69			81
	KIHAADHOO	17	56			73
	MAALHOS	13	52			65
	FULHADHOO		33			33
	KAMADHOO	11	24			35
	FEHENDHOO		18			18
ATOLL TOTAL		400	2058	1068	90	3616

ATOLL	ISLAND	PRE.	PRIM.	SECON.	H.SECON.	TOTAL
LHAVIYANI	HINNAVARU	112	738	304	21	1175
	NAIFARU	230	709	274		1213
	KURENDHOO	90	347	118		555
	OLHUVELIFUSHI		82			82
	MAAFILAAFUSHI		30			30
ATOLL TOTAL		432	1906	696	21	3055

ATOLL	ISLAND	PRE.	PRIM.	SECON.	H.SECON.	TOTAL
KAAFU	MAAFUSHI	82	315	150		547
	KAASHIDHOO	132	419	137		688
	HURAA	24	85	77		186
	THULUSDHOO	51	168	64		283
	GURADHOO	91	270	54		415
	DHIFFUSHI	32	184	51		267
	GAAFARU	53	181			234
	GULHI	40	148			188
	HIMMAFUSHI	34	125			159
ATOLL TOTAL		539	1895	533		2967

* Students transferred to other schools in the atoll after the tsunami

ދިވެހިރާއްޖޭގެ ޖުމްހޫރިއްޔާއި ސަރުކާރުގެ ގެޒެޓް ގައި ބަޔާންކޮށްފައިވާ ގޮތަށް

STUDENT ENROLMENT BY ATOLLS, ISLANDS AND LEVEL
(MARCH 2005)

ATOLL	ISLAND	PRE.	PRIM.	SECON.	H.SECON.	TOTAL
ALIFU ALIFU	RASDHOO	52	166	129		347
	THODDOO		244	104		348
	FERIDHOO		112	59		171
	BODUFULHADHOO		134			134
	HIMANDHOO	13	125			138
	UKULHAS		118			118
	MATHIVERI	42	97			139
	MAALHOS	22	34			56
ATOLL TOTAL		129	1030	292		1451

ATOLL	ISLAND	PRE.	PRIM.	SECON.	H.SECON.	TOTAL
ALIFU DHAALU	MAHIBADHOO	101	361	312	23	797
	MAAMIGILI	121	433	198		752
	DHAN'GETHI	48	132	72		252
	FENFUSHI		143	62		205
	OMADHOO	66	188	49		303
	HANGNAAMEEDHOO	36	139	48		223
	DHIGURAH		72	26		98
	KUN'BURUDHOO	22	76			98
	MANDHOO		53			53
	DHIDHDHOO	6	9			15
ATOLL TOTAL		400	1606	767	23	2796

ATOLL	ISLAND	PRE.	PRIM.	SECON.	H.SECON.	TOTAL
VAAVU	KEYODHOO		97	73		170
	FELIDHOO		89	51		140
	FULIDHOO		69	47		116
	RAKEEDHOO	9	28			37
	THINADHOO	4	5			9
ATOLL TOTAL		13	288	171		472

ATOLL	ISLAND	PRE.	PRIM.	SECON.	H.SECON.	TOTAL
MEEMU	DHIGGARU	36	153	163		352
	MULAH	58	280	111		449
	KOLHUFUSHI		178	97		275
	MULI		219	96		315
	MADVVAREE		116	56		172
	NAALAAFUSHI		40			40
	RAIMANDHOO		33			33
	VEYVAH	12	26			38
	MADIFUSHI *					
ATOLL TOTAL		106	1045	523		1674

* Students transferred to other schools in the atoll after the tsunami

ދިވެހިރާއްޖޭގެ ޖުމްހޫރިއްޔާ ގުޅިގެން ދިވެހިރާއްޖޭގެ ސަރުކާރުގެ ފަރާތުން

STUDENT ENROLMENT BY ATOLLS, ISLANDS AND LEVEL
(MARCH 2005)

ATOLL	ISLAND	PRE.	PRIM.	SECON.	H.SECON.	TOTAL
FAAFU	BILEYDHOO	70	232	129		431
	NILANDHOO	85	368	89		542
	MAGOODHOO	45	127	86		258
	FEEALI		193	73		266
	DHARAN'BOODHOO	7	52			59
ATOLL TOTAL		207	972	377		1556

ATOLL	ISLAND	PRE.	PRIM.	SECON.	H.SECON.	TOTAL
DHAALU	KUDAHUVADHOO	86	267	232		585
	MEEDHOO	53	279	97		429
	BAN'DIDHOO		211	91		302
	HULHUDHELI	31	134	57		222
	MAAEN'BOODHOO		158	52		210
	RIN'BUDHOO	12	108	42		162
	VAANEE		49			49
	GEMENDHOO *					
ATOLL TOTAL		182	1206	571		1959

ATOLL	ISLAND	PRE.	PRIM.	SECON.	H.SECON.	TOTAL
THAA	GUR Aidhoo	50	239	218		507
	THIMARAFUSHI		337	176		513
	BURUNEE		245	150		395
	VEYMANDHOO	48	169	130		347
	MADIFUSHI		156	88		244
	KIN'BIDHOO	51	208	83		342
	DHIYAMIGILI		120	31		151
	KANDOODHOO	22	125	25		172
	HIRILANDHOO	57	195	21		273
	OMADHOO	11	81			92
	VANDHOO		76			76
	GAADHIFUSHI	15	49			64
	VILUFUSHI *					
ATOLL TOTAL		254	2000	922		3176

ATOLL	ISLAND	PRE.	PRIM.	SECON.	H.SECON.	TOTAL
LAAMU	FONADHOO	85	299	256	13	653
	GAN	114	631	293		1038
	MAAVAH	70	304	179		553
	ISDHOO		564	149		713
	MAABAIIDHOO		179	101		280
	MAAMENDHOO		248	59		307
	MUNDOO	31	87	18		136
	HITHADHOO	31	188	28		247
	KUNAHANDHOO		175	28		203
	DHAN'BIDHOO	12	131			143
	KALHAIDHOO		96			96
	GAADHOO	24	41			65
ATOLL TOTAL		367	2943	1111	13	4434

* Students transferred to other schools in the atoll after the tsunami

ދިވެހިރާއްޖޭގެ ޖުމްހޫރިއްޔާ ގުޅިގެން ދިވެހިރާއްޖޭގެ ސަރުކާރުގެ ގެޒެޓްގައި ބަޔާންކޮށްފައިވާ ގޮތުން

STUDENT ENROLMENT BY ATOLLS, ISLANDS AND LEVEL
(MARCH 2005)

ATOLL	ISLAND	PRE.	PRIM.	SECON.	H.SECON.	TOTAL
GAAFU ALIFU	VILIN'GILI	174	528	228	9	939
	KOLAMAAFUSHI		259	129		388
	DHAANDHOO	84	296	87		467
	MAAMENDHOO	109	276	71		456
	GEMANAFUSHI	40	300	66		406
	DHEVVADHOO	47	138	47		232
	NILANDHOO		169	38		207
	KAN'DUHULHUDHOO		141			141
	KONDEY		51			51
	DHIYADHOO		19			19
ATOLL TOTAL		454	2177	666	9	3306

ATOLL	ISLAND	PRE.	PRIM.	SECON.	H.SECON.	TOTAL	
GAAFU DHAALU	THINADHOO	297	1052	628		1977	
	MADAVELI	69	265	126		460	
	GADHDHOO	59	398	104		561	
	FARES	53	210	69		332	
	HOAN'DEDHDHOO	36	142	54		232	
	VAADHOO		189			189	
	FIYOAREE	33	179			212	
	NADALLAA	44	168			212	
	RATHAFANDHOO	45	129			174	
ATOLL TOTAL		636	2732	981		4349	

ATOLL	ISLAND	PRE.	PRIM.	SECON.	H.SECON.	TOTAL
GNAVINYANI	FUVAHMULAH	546	1664	853	34	3097
ATOLL TOTAL		546	1664	853	34	3097

ATOLL	ISLAND	PRE.	PRIM.	SECON.	H.SECON.	TOTAL
SEENU	HITHADHOO	578	2205	1480	158	4421
	HULHUDHOO	74	283	220		577
	MARADHOO-FEYDHOO	130	369	177		676
	FEYDHOO	185	476	154		815
	MEEDHOO	79	246			325
	MARADHOO	114	218			332
ATOLL TOTAL		1160	3797	2031	158	7146

SECTION: 5

2005 مرسى 3 2005 مرسى 3 2005 مرسى 3 2005 مرسى 3
 SCHOOLS' ENROLMENTS IN MALE' BY GRADE AND GENDER
 (MARCH 2005)

SCHOOL	Type	NURS		LKG		UKG		GR. 1		GR. 2		GR. 3		GR. 4		GR. 5		GR. 6		GR. 7		GR. 8		GR. 9		GR. 10		GR. 11		GR. 12		Special		SUBTOTAL		TOTAL				
		F	M	F	M	F	M	F	M	F	M	F	M	F	M	F	M	F	M	F	M	F	M	F	M	F	M	F	M	F	M	F	M							
THAJUDHDEEN SCHOOL	G							94	89	119	111	152	165	108	100	110	118	108	143	115	110														806	836	1642			
ISKANDHAR SCHOOL	G							208	185	192	193	143	185	160	169	149	170	133	117	192	195															1177	1214	2391		
JAMAALUDHDEEN SCHOOL	G							117	148	125	139	152	152	171	156	172	165	151	166	107	142									13	18			1008	1086	2094				
KALAAFANU SCHOOL	G							111	105	105	94	95	83	112	112	128	128	141	140	122	134															814	796	1610		
ALMADHRASATHUL ARABIYYATHUL ISLAAMIYYA	G							18	19	17	11	16	23	16	20	24	30	29	29	29	43	18	19	9	15											176	209	385		
AMINIYA SCHOOL	G																					897		911		904										2712		2712		
MAJEDHIYYA SCHOOL	G																						581		349		404									1334		1334		
CENTRE FOR HIGHER SECONDARY EDUCATION	G																											319	320	363	370					682	690	1372		
MUHYIDDIN SCHOOL	G							20	31	20	29	33	40	35	28	40	37	38	32	38	31															224	228	452		
GHIYASUDDIN SCHOOL	G							95	79	107	107	87	99	104	97	126	148	132	155	175	185																826	870	1696	
IMADHUDDIN SCHOOL	G							81	86	129	167	161	147	154	174	122	128	125	153	103	118											26	25			901	998	1899		
DHARUMAVANTHA SCHOOL	G																					455		462		384										1301		1301		
FAREEDIYYA SCHOOL	G	14	17	14	23	20	25	17	20	23	21	23	29	21	21	19	32	22	46	36	41	40	40	30	24	16	23							11	8	306	370	676		
GALOLHU MADHRASA	C	299	260	189	188	190	185										75	72	96	72	124	66	112	72	80	55										1165	970	2135		
MAAFANNU MADHRASA	C	202	214	144	140	134	139								20	27	48	42	58	42	77	48	74	53	54	15										811	720	1531		
MADHRASATHUL AHMADHIYYA	C	138	177	121	157	185	192													96	97	247	149	191	125	89	67									1067	964	2031		
MADHRASATHUL AMEER AHMED	C	199	202	98	97	70	105									41	46	51	53	75	67	83	100	74	49											691	719	1410		
ENGLISH PREPARATORY AND SECONDARY SCHOOL	P															30	54	56	71	121	95	157	91	268	118	24	32	20	29							676	490	1166		
MALE' ENGLISH SCHOOL	P																			136	127	327	200	411	213	129	101										1003	641	1644	
FALAAH PRE-SCHOOL	P	32	25	23	25	18	21																														73	71	144	
MADHRASATHUL ALIYA	P	33	29	20	19	20	22								21	10	11	8	8	9	11	4	13	7	17	6											154	114	268	
SHEIKH ABDURAHMAN PRE-SCHOOL	P	26	28	27	26	23	13																															76	67	143
TOTAL		22	943	952	636	675	660	702	761	762	837	872	862	923	881	877	931	993	1084	1203	1418	1470	1937	1724	1991	1511	1631	1222	343	352	383	399	50	51	15348	14688	30036			

G - Government , C - Community, P - Private

ދިވެހިރާއްޖޭގެ ސަރުކާރުގެ ގެޒެޓްގައި ބަޔާންކޮށްފައިވާ ގޮތުން
 SCHOOLS' ENROLMENTS IN HAA ALIFU ATOLL BY GRADE AND GENDER
 (MARCH 2005)

SCHOOL	ISLAND	Type	NURS		LKG		UKG		GR. 1		GR. 2		GR. 3		GR. 4		GR. 5		GR. 6		GR. 7		GR. 8		GR. 9		GR. 10		GR. 11		GR. 12		SUBTOTAL		TOTAL	
			F	M	F	M	F	M	F	M	F	M	F	M	F	M	F	M	F	M	F	M	F	M	F	M	F	M	F	M	F	M				
HA. ATHOLHU MADARSA	HOARAFUSHI	G							19	22	16	29	32	36	34	31	41	34	42	56	79	92	106	103	23	20	58	38					450	461	911	
HA. ATHOLHU THAULEEMEE MARUKAZU	DHIDHDHOO	G							34	26	33	27	34	42	33	20	32	47	46	46	61	85	97	117	58	51	75	45					503	506	1009	
MADHRASATHUL SULTHAAN MOHAMED THAKURUFAANUL AUZAM	UTHEEM	G							7	6	7	4	9	6	12	11	12	13	15	17	11	5	18	15									91	77	168	
BAARASHU SCHOOL	BAARAH	G							17	21	16	24	18	16	13	24	22	25	27	51	35	35	28	28	14	12							190	236	426	
BERINMADHOO SCHOOL	BERINMADHOO	G				3			2			2	1	1																		6	3	9		
IHAVANDHOO SCHOOL	IHAVANDHOO	G							48	30	30	35	33	38	26	41	39	45	57	54	99	104	89	85	28	29	50	61	2	17			501	539	1040	
MAARANDHOO SCHOOL	MAARANDHOO	G							8	4	11	6	4	10	9	3	11	9	4	9	6	7										53	48	101		
MADHRASATHUL SOBAH	FILLADHOO	G							10	6	13	8	7	10	11	8	6	8	5	11	4	14											56	65	121	
MADHRASATHUL SHAHEEDHU ALI THAKURUFAAN	THAKANDHOO	G							5	2	7	4	7	9	6	4	5	7	10	6	3	5											43	37	80	
MADHRASATHUL SHEIKH IBRAHIM	KELAA	G							11	12	16	23	24	19	5	21	19	21	29	30	28	41	43	40	19	23	34	21					228	251	479	
MADHARSATHUL AMEEN	HATHIFUSHI	G			1	1	4	1	1	4		3	1	3			1	2	3	3		2											11	19	30	
MULHADHOO SCHOOL	MULHADHOO	G		2	1	2	2	3	3		3	2	2	2	1	2	1	2	4	6													17	21	38	
MURADHOO SCHOOL	MURADHOO	G							7	5	4	2	4	8	6	3	7	7	10	11	26	19												64	55	119
THURAAKUNU SCHOOL	THURAAKUNU	G			3	2	5	8	4	4	6	8	12	3	1	6	7	2	9	7	4	9											51	49	100	
ULIGAMU SCHOOL	ULIGAMU	G							6	4	2	3	1	2	7	3	3	13	10	8	10	3												39	36	75
VASHAFARU SCHOOL	VASHAFARU	G	10	7	10	5	12	4	9	13	9	10	10	15	6	6	7	8	15	15	11	11											99	94	193	
GHAZEE MOHAMED PRE-SCHOOL	DHIDHDHOO	C	20	21	26	25	22	25																									68	71	139	
LILY PRE-SCHOOL	KELAA	C	8	15	16	15	19	15																									43	45	88	
AHADHIYYA PRE-SCHOOL	BAARAH	C			9	9	6	5																									15	14	29	
BAARASHU PRE-SCHOOL	BAARAH	C			6	7	6	10																									12	17	29	
WAFU PRE-SCHOOL	IHAVANDHOO	P	4	7	11	18	21	26																									36	51	87	
UMAR MOHAMED PRE-SCHOOL	FILLADHOO	P	9	8	4	7	9	12																									22	27	49	
ADAM SALEEM HANDHAANE PRE-SCHOOL	HOARAFUSHI	P	22	16	9	10	13	23																									44	49	93	
ETHUMAA PRE-SCHOOL	THAKANDHOO	P	2	3	6	7	7	6																									15	16	31	
AHMED KHATHEEB MEMORIAL PRE-SCHOOL	THAKANDHOO	P	5	2	3	4																											8	6	14	
TOTAL			25	80	81	105	112	129	138	191	159	173	190	199	220	170	183	213	243	286	330	377	432	381	388	142	135	217	165	2	17			2665	2793	5458

G - Government, C - Community, P - Private

ދިވެހިސަރުކާރުގެ ގެޒެޓްގައި ބަޔާންކުރި ގޮތުގައި ދިވެހިރާއްޖޭގެ ބޭރުގެ ސަރުކާރުގެ ދަށުން ހިންގާ ފަރާތްތަކުގެ ފަރާތުން
 SCHOOLS' ENROLMENTS IN HAA DHAALU ATOLL BY GRADE AND GENDER
 (MARCH 2005)

SCHOOL	ISLAND	Type	NURS		LKG		UKG		GR. 1		GR. 2		GR. 3		GR. 4		GR. 5		GR. 6		GR. 7		GR. 8		GR. 9		GR. 10		GR. 11		GR. 12		SUBTOTAL		TOTAL	
			F	M	F	M	F	M	F	M	F	M	F	M	F	M	F	M	F	M	F	M	F	M	F	M	F	M	F	M	F	M				
H.DH. ATHOLHU MADHARUSAA	VAIKARADHOO	G							17	14	15	12	15	20	16	13	15	16	17	19	22	37	37	34	17	19	27	33					198	217	415	
H.DH. ATHOLHU THAULEEMEE MARUKAZU	KULHUDHUFFUSHI	G							54	65	52	70	82	69	76	88	73	90	96	87	159	165											592	634	1226	
FARIDHOO SCHOOL	FARIDHOO	G		2	2	2	4	1			2	4	1	1			1	3														10	13	23		
FINEY SCHOOL	FINEY	G	7	3	3	4	2	5	7	3	3	3	5	4	8	6	5	5	11	7													51	40	91	
HANIMAADHOO SCHOOL	HANIMAADHOO	G							11	15	17	12	15	15	12	9	16	15	29	28	26	34	38	23	8	18	32	28					204	197	401	
HIRIMARADHOO SCHOOL	HIRIMARADHOO	G			5	1	4	5	4	6	3	5	11	7	4	5	1	8		2													32	39	71	
KUN'BURUDHOO SCHOOL	KUN'BURUDHOO	G	1	1			1	1	1	1				2		1																3	6	9		
KUMUNDHOO SCHOOL	KUMUNDHOO	G							6	15	19	21	11	16	14	14	21	17	27	12	43	46	12	7									153	148	301	
KURIN'BEE SCHOOL	KURIN'BEE	G			4	12	3	10	8	11	5	10	5	4	9	8	7	4	9	6	5	4											55	69	124	
MADHRASATHUL HUSSAINIYYA	MAVAIDHOO	G			7	3	5	2	2	2		2	4	2	2	3		1	3	2	5	4											28	21	49	
MAKUNUDHOO SCHOOL	MAKUNUDHOO	G							17	10	14	11	21	19	24	16	13	21	15	14	23	19	37	49	15	10							179	169	348	
NAIVAADHOO SCHOOL	NAIVAADHOO	G	1	2	1		3	4	5	8	4	4	9	6	10	5	6	8	7	11	7	15											53	63	116	
NELLAIHOO SCHOOL	NELLAIHOO	G			3	13	10	8	7	11	10	9	15	9	4	20	16	11	13	14	20	32	27	21									125	148	273	
NEYKURENDHOO SCHOOL	NEYKURENDHOO	G	3	4	8	8	10	8	9	9	8	12	7	10	10	20	9	14	19	25	36	52	40	53	25	21							184	236	420	
NOLHIVARAM SCHOOL	NOLHIVARAM	G							19	19	17	25	27	28	26	29	25	29	31	40	47	50	26	36	10	11	14	7					242	274	516	
NOLHIVARAMFARU SCHOOL	NOLHIVARAMFARU	G			3	3	5	4	3	1	7	5	5	4	4	7	7	6	7	7	3	2											44	39	83	
JALAAALUDHEEN SCHOOL	KULHUDHUFFUSHI	G																				252	248	90	89	101	88	8	15	7	14	458	454	912		
AFEFUDDHEEN SCHOOL	KULHUDHUFFUSHI	G							26	21	27	29	27	40	25	27	33	35	30	31	62	66											230	249	479	
AMEERU AMEEN SCHOOL	KULHUDHUFFUSHI	C	74	66	47	71	53	89																									174	226	400	
SULAIMANIYYA PRE-SCHOOL	VAIKARADHOO	P	7	10	16	14	12	15																									35	39	74	
ATHEAAL PRE-SCHOOL	KUMUNDHOO	P	12	8	12	9	12	14																										36	31	67
SA ADHA PRE-SCHOOL	HANIMAADHOO	P	20	19	20	19	10	9																										50	47	97
NARES PRE-SCHOOL	MAKUNUDHOO	P	6	7	6	6	2	6																										14	19	33
DHEKUNUVEHI NURSERY CLASS	MAKUNUDHOO	P	10	6	2	6	3	5																										15	17	32
NAIVAADHOO ISDHARIVARUNGE JAMIYYAAGE PRE-SCHOOL	NAIVAADHOO	P	5	4	2	2	3	5																										10	11	21
TOTAL			25	146	132	141	173	142	191	196	211	203	234	260	256	244	271	248	283	314	305	458	526	469	471	165	168	174	156	8	15	7	14	3175	3406	6581

G - Government, C - Community, P - Private

ދިވެހިސަރުކާރުގެ ގެޒެޓްގައި ބަޔާންކުރި ޖަދުވަލު 10

SCHOOLS' ENROLMENTS IN SHAVIYANI ATOLL BY GRADE AND GENDER
(MARCH 2005)

SCHOOL	ISLAND	Type	NURS		LKG		UKG		GR. 1		GR. 2		GR. 3		GR. 4		GR. 5		GR. 6		GR. 7		GR. 8		GR. 9		GR. 10		GR. 11		SUBTOTAL		TOTAL	
			F	M	F	M	F	M	F	M	F	M	F	M	F	M	F	M	F	M	F	M	F	M	F	M	F	M	F	M				
SH. ATHOLHU MADHARUSAA	KANDITHEEM	G							10	14	17	9	12	27	26	13	22	17	23	24	38	35	40	40	18	27	46	48			252	254	506	
SH. ATHOLHU THAULEEMEE MARUKAZU	KOMANDOO	G							10	11	13	15	15	20	16	14	20	26	21	25	22	32	30	43	34	42	41	39	7	15	229	282	511	
BILEHIFAHI SCHOOL	BILEHIFAHI	G							5	15	10	6	4	11	14	4	5	10	5	16	15	8	12	13						70	83	153		
FUNADHOO SCHOOL	FUNADHOO	G							20	18	14	25	24	25	15	19	24	20	23	20	45	50	31	29	25	23	31	16			252	245	497	
FEEVAKU SCHOOL	FEEVAH	G							9	11	7	15	6	15	18	11	8	15	18	12	23	33	12	17	16	10	9	16			126	155	281	
FEYDHOO SCHOOL	FEYDHOO	G							7	10	8	10	7	8	6	8	8	22	14	21	22	17	18	13						90	109	199		
FOAKAIDHOO SCHOOL	FOAKAIDHOO	G							29	18	17	14	20	16	17	20	10	16	19	16	36	37	34	40	14	12	22	20			218	209	427	
GOIDHOO SCHOOL	GOIDHOO	G							21	17	6	8	6	8	6	6	9	4	5	7	16	11	20	12						89	73	162		
LHAIMAGU SCHOOL	LHAIMAGU	G	8	7	2	10	4	4	4	4	7	10	7	10	13	12	12	12	13	14	11	8	17	10	13	9			111	110	221			
MAAKAN'DOODHOO SCHOOL	MAAKAN'DOODHOO	G							4	4	3	6	4	5	1	5	2	8	1	6	8	4								23	38	61		
MAAUN'GOODHOO SCHOOL	MAAUN'GOODHOO	G							10	10	15	15	14	8	10	16	12	13	16	11	13	24	22	25	10	11	19	28			141	161	302	
NARUDHOO SCHOOL	NARUDHOO	G			6	7	4	5	7	7	4	6	4	10	4	8	7	6	9	8	23	17	18	11						86	85	171		
NOOMARAA SCHOOL	NOOMARA	G							7	8	12	6	7	7	7	8	14	6	9	8	11	8	20	25						87	76	163		
MILANDHOO SCHOOL	MILANDHOO	G							19	20	12	27	23	19	19	17	19	21	24	18	30	36	40	41	17	24	37	25			240	248	488	
KOMANDOO PRE-SCHOOL	KOMANDOO	C	20	17	11	11	16	13																						47	41	88		
SH. MILANDHOO PRE-SCHOOL	MILANDHOO	C	10	15	18	12	15	23																						43	50	93		
ALMADHRASATHUL MUNAVVARAA	MAROSHI	P			4	8	5	6	5	6	10	5	7	11	7	5	11	10	7	10	14	13	7	12	11	5	12	11			100	102	202	
TOTAL			17	38	39	41	48	44	51	167	173	155	177	160	200	179	166	183	206	207	216	327	333	321	331	158	163	217	203	7	15	2204	2321	4525

G - Government , C - Community, P - Private

ދިވެހިސަރުކާރުގެ ގެޒެޓް ގައި ބަޔާންކުރި ގޮތުގައި ނޯންޏު ގަޑީގައި ވަނީ ބަޔާންކުރި ގޮތުގައި
SCHOOLS' ENROLMENTS IN NOONU ATOLL BY GRADE AND GENDER
 (MARCH 2005)

SCHOOL	ISLAND	Type	NURS		LKG		UKG		GR. 1		GR. 2		GR. 3		GR. 4		GR. 5		GR. 6		GR. 7		GR. 8		GR. 9		GR. 10		GR. 11		SUBTOTAL		TOTAL		
			F	M	F	M	F	M	F	M	F	M	F	M	F	M	F	M	F	M	F	M	F	M	F	M	F	M	F	M	F	M			
N. ATHOLHU MADHARUSAA	MANADHOO	G							15	14	16	22	24	23	10	14	12	23	16	16	19	27	33	37	36	35	34	20			215	231	446		
N. ATHOLHU THAULEEMEE MARUKAZU	VELIDHOO	G							21	21	18	21	21	22	14	23	21	21	23	32	44	50	49	55	44	19	16	14	3	11	274	289	563		
MEYNA SCHOOL	HOLHUDHOO	G							21	17	13	10	14	18	19	17	25	29	28	32	56	64	39	38	39	51	62	45			316	321	637		
FODHDHOO SCHOOL	FOADHOO	G							1	2	4	5	1	3	4	2	2	5	4	4	4	5									20	26	46		
HENBADHOO SCHOOL	HENBADHOO	G							9	6	8	7	8	7	4	7	9	14	8	12	8	8									54	61	115		
KENDHIKULHUDHOO SCHOOL	KENDHIKULHUDHOO	G							20	15	10	21	15	19	24	24	24	19	19	32	59	51	37	40	27	16	33	35			268	272	540		
KUDAFAREE SCHOOL	KUDAFAREE	G							7	9	5	5	2	7	6	13	6	13	8	5	8	15	9	2	14	6	4	8			69	83	152		
LANDHOO SCHOOL	LANDHOO	G		1					18	13	18	16	15	17	16	18	19	17	30	32	29	27	18	11							163	152	315		
LHOEE SCHOOL	LHOHI	G							6	7	6	5	7	14	10	7	8	20	14	16	13	17	14	14							78	100	178		
MAAFARU SCHOOL	MAAFARU	G							16	14	11	17	15	18	18	13	29	34	16	17	18	15	33	21							156	149	305		
MAALHENDHOO SCHOOL	MAALHENDHOO	G							6	15	16	8	17	14	12	11	15	19	19	30	50	44									135	141	276		
MAGOODHOO SCHOOL	MAGOODHOO	G							1	3	1	7	2	1	2	4		2		2											6	19	25		
HIDHAYA SCHOOL	MILADHOO	G							9	12	11	13	13	11	13	17	13	20	22	24	35	44	13	13	21	7					150	161	311		
HOLHUDHOO PRE-SCHOOL	HOLHUDHOO	C	9	12	13	11	9	6																							31	29	60		
MAAFARU PRE-SCHOOL	MAAFARU	C	19	11	12	13	13	12																							44	36	80		
KUDAFAREE RAYYITHUNGE PRE-SCHOOL	KUDAFAREE	C	3	7	9	5	7	3																							19	15	34		
HENBADHOO PRE-SCHOOL	HENBADHOO	C	6	7	2	1	5	6																							13	14	27		
NAHUZAA PRE-SCHOOL	VELIDHOO	C	18	16	19	13	13	12																							50	41	91		
SKID PRE-SCHOOL	KENDHIKULHUDHOO	P	5	4	5	6	6	5																							16	15	31		
AMIRIEE THUTHUKUDHINGE THAULEEMUDHEY CLASS	LANDHOO	P	29	17	18	12	17	14																							64	43	107		
SAVAA THUTHUKUDHINGE THAULEEM DHEY CLASS	HOLHUDHOO	P	1	2	2	2	1	2																							4	6	10		
TOTAL			21	90	77	80	63	71	60	150	148	137	157	154	174	152	170	183	236	207	254	343	367	245	231	181	134	149	122	3	11	2145	2204	4349	

G - Government , C - Community, P - Private

ދިވެހިސަރުކާރުގެ ގެޒެޓް ގައި ބަޔާންކުރި މަޢުލޫމާތު ފޮޓޯ ޖެނެރޭޓްކުރުމަށް ޖެނެރޭޓްކުރި ސަރުކާރުގެ ރިޕޯޓް

SCHOOLS' ENROLMENTS IN RAA ATOLL BY GRADE AND GENDER
(MARCH 2005)

SCHOOL	ISLAND	Type	NURS		LKG		UKG		GR. 1		GR. 2		GR. 3		GR. 4		GR. 5		GR. 6		GR. 7		GR. 8		GR. 9		GR. 10		GR. 11		SUBTOTAL		TOTAL	
			F	M	F	M	F	M	F	M	F	M	F	M	F	M	F	M	F	M	F	M	F	M	F	M	F	M	F	M				
R. ATHOLHU THAULEEMEE MARUKAZU	MEEDHOO	G							28	17	17	27	28	20	20	29	27	28	23	37	50	61	53	43	37	30	35	44			318	336	654	
ANGOLHITHEEMU SCHOOL	ANGOLHITHEEM	G			2	4			9	3	4	3	7	8	7	7	7	6	4	5	12	5									52	41	93	
ALIFUSHI SCHOOL	ALIFUSHI	G							28	30	31	24	23	33	33	29	36	30	45	33	75	67	45	52	20	37	42	44	2	16	380	395	775	
FAINU SCHOOL	FAINU	G	3	3	4	5			6	2	4	1	7	5	3	3	2	5	7	10	5	4								41	38	79		
INGURADHOO SCHOOL	INGURADHOO	G	10	16	19	11	10	11	16	13	16	13	11	14	20	15	17	25	24	23	54	63	44	36	21	26	23	42			285	308	593	
INNAMAADHOO SCHOOL	INNAMAADHOO	G			13	10	8	9	8	7	6	10	9	6	11	8	9	12	7	17	12	6	13	7	10	9				106	101	207		
KINOLHAHU SCHOOL	KINOLHAS	G							3	5	8	5	3	9	6	11	5	4	11	3	6	7								42	44	86		
MAAKURATH SCHOOL	MAAKURATH	G					12	12	8	10	7	14	15	22	16	23	20	17	21	28	24	30	29	27	22	16	10	12			184	211	395	
MADUVVAREE SCHOOL	MADUVVAREE	G							27	22	24	34	24	34	32	35	28	18	41	38	3	5	32	32	15	10	18	29			244	257	501	
RASGATHEEMU SCHOOL	RASGATHEEM	G	10	4	11	9	6	8	11	7	11	12	8	8	10	5	3	11	8	16	11	13	1	4						90	97	187		
RASMAADHOO SCHOOL	RASMAADHOO	G	2	16	3	5	2	6	4	5	8	6	6	6	5	4	3	9	2	19	12	18	16	10	9	4	5	9			77	117	194	
UNGOOFAARU SCHOOL	UNGOOFAARU	G							38	33	45	43	34	40	39	39	34	42	43	55	64	75	104	70	44	24	47	30			492	451	943	
HULHUDHUFFARU SCHOOL	HULHUDHUFAARU	G							27	16	23	20	28	28	25	18	25	35	38	43	46	62	64	52	35	36	23	30			334	340	674	
VAADHOO SCHOOL	VAADHOO	G							3	5	2	5	5	6	5	2	11	4	13	15	6	5								45	42	87		
MEEDHOO PRE-SCHOOL	MEEDHOO	C	18	23	18	15	12	16																						48	54	102		
ALIFUSHEE PRE-SCHOOL	ALIFUSHI	C	17	16	20	24	27	25																							64	65	129	
M.E.C. NURSERY CLASS	MADUVVAREE	P	16	11	14	17	14	15																							44	43	87	
ABDULLA ALI PRE-SCHOOL	HULHUDHUFAARU	P	10	16	7	14	11	9																							28	39	67	
BAHAARU PRE-SCHOOL	HULHUDHUFAARU	P	4	6	7	9	6	10																							17	25	42	
FATHIS PRE-SCHOOL	UNGOOFAARU	P	30	27	28	26	24	34																							82	87	169	
TOTAL			20	120	138	144	145	134	159	216	175	206	217	208	239	232	228	227	246	287	342	380	421	401	333	213	192	203	240	2	16	2973	3091	6064

G - Government, C - Community, P - Private

ދިވެހިސަރުކާރުގެ ގެޒެޓްގައި ބަޔާންކުރި ޖަދުވަލު ނަންބަރު 10
SCHOOLS' ENROLMENTS IN BAA ATOLL BY GRADE AND GENDER
(MARCH 2005)

SCHOOL	ISLAND	Type	NURS		LKG		UKG		GR. 1		GR. 2		GR. 3		GR. 4		GR. 5		GR. 6		GR. 7		GR. 8		GR. 9		GR. 10		GR. 11		GR. 12		SUBTOTAL		TOTAL	
			F	M	F	M	F	M	F	M	F	M	F	M	F	M	F	M	F	M	F	M	F	M	F	M	F	M	F	M	F	M				
B. ATHOLHU MADHARUSAA	DHARAVANDHOO	G							7	7	11	6	10	13	12	14	14	15	19	23	22	37	21	26	9	13	21	10					146	164	310	
B. ATHOLHU THAULEEMEE MARUKAZU	EYDHAFUSHI	G							19	33	24	28	31	33	29	32	31	50	44	52	72	78	90	112	47	44	51	65	12	32	9	18	459	577	1036	
DHONFANU SCHOOL	DHONFANU	G			4	4	2	2	1	2	3	10	5	11	5	6	5	3	7	7	2	2										34	47	81		
FEHENDHOO SCHOOL	FEHENDHOO	G							1	1	2		2	2	1		4		3	1	1											7	11	18		
FULHADHOO SCHOOL	FULHADHOO	G							1	4	3	3	4	4	3	2	1		2	1	2	3											16	17	33	
GOIDHOO SCHOOL	GOIDHOO	G			7	2	6	7	6	8	9	10	7	9	12	9	5	15	14	15	15	18	14	11									95	104	199	
HITHAADHOO SCHOOL	HITHAADHOO	G							8	2	9	10	12	12	5	11	13	21	15	15	18	19	18	24	5	12	21	24					124	150	274	
KAMADHOO SCHOOL	KAMADHOO	G			2	3	3	3	2	3	2	7	1	3	2	4																	12	23	35	
KENDHOO SCHOOL	KENDHOO	G							6	19	15	18	5	19	9	12	14	18	14	16	21	20	25	23	12	20	33	26					154	191	345	
KIHAADHOO SCHOOL	KIHAADHOO	G			5	6	4	2	7	2	6	2	5	5	3	5	7	6	1	2	3	2											41	32	73	
KUDARIKILU SCHOOL	KUDARIKILU	G			6	3	5	3	4	6	8	3	7	8	5	5	4	7	6	8	9	14	16	8	10	6							80	71	151	
MAALHOTHU SCHOOL	MAALHOS	G			2	5	4	2	6	5	2	4	3	1	5	3	10	6	1	4		2											33	32	65	
THULHAADHOO SCHOOL	THULHAADHOO	G							19	22	33	25	32	31	21	29	24	21	23	26	42	70	39	60	36	39	28	49	6	13			303	385	688	
BAHIYYA PRE-SCHOOL	EYDHAFUSHI	C			18	27	24	27																									42	54	96	
THULHAADHOO SPORTS CLUB PRE-SCHOOL	THULHAADHOO	P	7	12	16	16	14	25																									37	53	90	
AISIRU PRE-SCHOOL	KENDHOO	P	5	14	14	13	6	19																									25	46	71	
T.S.S.C PRE-SCHOOL	THULHAADHOO	P	13	2	7	12	5	12																									25	26	51	
TOTAL			17	25	28	81	91	73	102	87	114	127	126	124	151	112	132	128	166	146	172	207	266	223	264	119	134	154	174	18	45	9	18	1633	1983	3616

G - Government , C - Community, P - Private

ދިވެހިސަރުކާރުގެ ގެޒެޓްގައި ބަޔާންކުރި ޖަނުއަރީ 2005 ވަނަ އަހަރުގެ ލަންޕިންގ ޖަނުއަރީ 2005 ވަނަ އަހަރުގެ ލަންޕިންގ

SCHOOLS' ENROLMENTS IN LHAVIYANI ATOLL BY GRADE AND GENDER
(MARCH 2005)

SCHOOL	ISLAND	Type	NURS		LKG		UKG		GR. 1		GR. 2		GR. 3		GR. 4		GR. 5		GR. 6		GR. 7		GR. 8		GR. 9		GR. 10		GR. 11		SUBTOTAL		TOTAL
			F	M	F	M	F	M	F	M	F	M	F	M	F	M	F	M	F	M	F	M	F	M	F	M	F	M	F	M			
LH. ATHOLHU MADHARUSAA	KURENDHOO	G							15	8	20	15	20	28	23	16	29	25	26	27	44	51	34	34	13	15	8	14			232	233	465
LH. ATHOLHU THAULEEMEE MARUKAZU	HINNAVARU	G							35	24	8	48	42	54	39	45	54	57	54	52	111	115	53	75	40	39	53	44	11	10	500	563	1063
MAAFILAAFUSHI SCHOOL	MAAFILAAFUSHI	G							1	4	4	3		3	1	3	1	3	2	3	1	1								10	20	30	
MADHRASATHUL IFTHITHAAH	NAIFARU	G							37	40	43	42	36	36	43	36	33	46	63	79	76	99	87	79	30	24	35	19			483	500	983
OLHUVELI FUSHI SCHOOL	OLHUVELIFUSHI	G							5	2	11	3	6	6	5	7	6	5	9	9	4	4									46	36	82
NOORAANEE PRE-SCHOOL	NAIFARU	C	16	22	19	23	24	21																						59	66	125	
ROASHANEE PRE-SCHOOL	NAIFARU	C	14	17	16	25	17	16																							47	58	105
HABASHEE PRE-SCHOOL	KURENDHOO	C	11	12	13	20	14	20																							38	52	90
FANNU PRE-SCHOOL	HINNAVARU	P	14	13	20	24	22	19																							56	56	112
TOTAL		9	55	64	68	92	77	76	93	78	86	111	104	127	111	107	123	136	154	170	236	270	174	188	83	78	96	77	11	10	1471	1584	3055

G - Government , C - Community, P - Private

ދިވެހިސަރުކާރުގެ ގެޒެޓް ގައި ބަޔާންކޮށްފައިވާ ގޮތުގައި

**SCHOOLS' ENROLMENTS IN KAAFU ATOLL BY GRADE AND GENDER
(MARCH 2005)**

SCHOOL	ISLAND	Type	NURS		LKG		UKG		GR. 1		GR. 2		GR. 3		GR. 4		GR. 5		GR. 6		GR. 7		GR. 8		GR. 9		GR. 10		SUBTOTAL		TOTAL	
			F	M	F	M	F	M	F	M	F	M	F	M	F	M	F	M	F	M	F	M	F	M	F	M	F	M	F	M		
K. ATHOLHU MADHARUSAA	KAASHIDHOO	G							25	34	17	25	24	18	21	31	16	29	42	41	43	53	61	34	9	10	13	10	271	285	556	
K. ATHOLHU THAULEEMEE MARUKAZU	THULUSDHOO	G							13	6	9	11	8	12	8	10	11	10	6	17	24	23	14	15	5	6	13	11	111	121	232	
DHIFUSHI SCHOOL	DHIFUSHI	G			13	6	8	5	14	7	10	4	7	9	10	15	19	18	11	16	22	22	20	5	12	4	9	1	155	112	267	
GAAFARU SCHOOL	GAAFARU	G							7	4	7	12	14	10	8	6	13	12	12	11	28	37							89	92	181	
GULHEE MADHRASA	GULHI	G	5	5	7	3	7	13	7	7	8	11	6	12	6	8	8	16	7	9	20	23							81	107	188	
GURAIIDHOO SCHOOL	GURAIIDHOO	G							15	13	16	19	18	26	10	17	16	25	16	25	20	34	17	18	12	7			140	184	324	
HIMMAFUSHEE SCHOOL	HIMMAFUSHI	G			6	5	8	15	7	10	8	10	8	9	10	9	9	8	4	16	4	13							64	95	159	
HURAA SCHOOL	HURAA	G	2	4	5	4	7	2	6		7	5	7	7	4	5	6	5	6	5	9	13	12	24	5	9	12	15	88	98	186	
MAAFUSHI SCHOOL	MAAFUSHI	G							15	13	13	12	21	16	22	17	23	20	14	25	35	35	35	44	19	19	15	18	212	219	431	
THAULEEMAAI MASAKKAIY UNGANNAIDHEY KUDAKUDHINGE MARUKAZU	MAAFUSHI	G								4		5		8		8		5		4										34	34	
THULUSDHOO PRE-SCHOOL	THULUSDHOO	C	5	5	8	11	14	8																					27	24	51	
MAAFUSHI PRE-SCHOOL	MAAFUSHI	C	15	15	15	14	12	11																					42	40	82	
VOSHU FILAA PRE-SCHOOL	GAAFARU	C	7	8	11	10	8	9																					26	27	53	
KUDA MOHAMED PRE-SCHOOL	GURAIIDHOO	P	13	14	9	12	11	12																					33	38	71	
MURAADHU PRE-SCHOOL	GURAIIDHOO	P	4	4	3	3	3	3																					10	10	20	
AMALEE PRE-SCHOOL	KAASHIDHOO	P	16	14	13	18	20	13																					49	45	94	
SALAAHIYYA PRE-SCHOOL	KAASHIDHOO	P	18	9		3	7	1																					25	13	38	
TOTAL			17	85	78	90	89	105	92	109	98	95	114	113	127	99	126	121	148	118	169	205	253	159	140	62	55	62	55	1423	1544	2967

G - Government, C - Community, P - Private

ދިވެހިރާއްޖޭގެ ޖުމްހޫރިއްޔާއި ހިޔަފުސާތާއި ސަލާމަތީގެ ޖަދުވަލު
 SCHOOLS' ENROLMENTS IN ALIFU ALIFU ATOLL BY GRADE AND GENDER
 (MARCH 2005)

SCHOOL	ISLAND	Type	NURS		LKG		UKG		GR. 1		GR. 2		GR. 3		GR. 4		GR. 5		GR. 6		GR. 7		GR. 8		GR. 9		GR. 10		SUBTOTAL		TOTAL
			F	M	F	M	F	M	F	M	F	M	F	M	F	M	F	M	F	M	F	M	F	M	F	M	F	M	F	M	
A.A. ATHOLHU MADHARUSAA	FERIDHOO	G							8	7	5	5	6	8	9	7	6	12	5	12	9	13	12	10	11	11	8	7	79	92	171
A.A. ATHOLHU THAULEEMEE MARUKAZU	RASDHOO	G							6	8	8	3	11	15	10	13	11	13	9	10	22	27	28	39	16	18	17	11	138	157	295
BODUFOLHUDHOO SCHOOL	BODU FOLHUDHOO	G							4	6	5	12	7	8	12	13	8	2	3	9	23	22						62	72	134	
HIMANDHOO SCHOOL	HIMANDHOO	G							8	13	6	9	9	9	6	6	13	12	6	5	6	17						54	71	125	
MAALHOS SCHOOL	MAALHOS	G			4	8	5	5	7	1	4	3	3	2	1	4	3	2	3	1								30	26	56	
MATHIVERI SCHOOL	MATHIVERI	G							5	11	7	9	4	5	8	6	5	7	7	6	4	13						40	57	97	
THODDOO SCHOOL	THODDOO	G							15	13	12	22	15	21	14	16	10	22	15	18	25	26	16	25	11	11	30	11	163	185	348
BODUFOLHUDHOO SCHOOL	UKULHAS	G							10	10	8	7	10	7	6	7	8	12	1	10	9	13						52	66	118	
HIMANDHOO SCHOOL	MATHIVERI	P	4	4	13	7	10	4																				27	15	42	
MAALHOS SCHOOL	HIMANDHOO	P	2	2	2	2	2	3																				6	7	13	
MATHIVERI SCHOOL	RASDHOO	P	10	6	3	11	15	7																				28	24	52	
TOTAL			11	16	22	28	32	19	63	69	55	70	65	75	66	72	64	82	49	71	98	131	56	74	38	40	55	29	679	772	1451

G - Government , C - Community, P - Private

ދިވެހިސަރުކާރުގެ ގެޒެޓްގައި އާންމުކުރި ލިޔުމެއްގެ ދަށުން ބަދަލުގެ ތެރޭގައި 2005 ވަނަ އަހަރުގައި ލިޔެފައިވާ ފަންނީ ދާއިރާގެ ބަޅެއްގައި

SCHOOLS' ENROLMENTS IN ALIFU DHAALU ATOLL BY GRADE AND GENDER
(MARCH 2005)

SCHOOL	ISLAND	Type	NURS		LKG		UKG		GR. 1		GR. 2		GR. 3		GR. 4		GR. 5		GR. 6		GR. 7		GR. 8		GR. 9		GR. 10		GR. 11		GR. 12		SUBTOTAL		TOTAL
			F	M	F	M	F	M	F	M	F	M	F	M	F	M	F	M	F	M	F	M	F	M	F	M	F	M	F	M	F	M			
A.DH. ATHOLHU THULEEMEE MARUKAZU	MAHIBADHOO	G							14	25	17	18	25	33	19	19	24	19	20	29	42	57	63	75	46	50	39	39	3	20			312	384	696
A.DH. ATHOLHU MADHARUSAA	MAAMIGILI	G							20	15	31	42	17	15	34	20	31	36	29	30	51	62	30	43	29	27	29	40			301	330	631		
DHAN'GETHI SCHOOL	DHANGETHI	G	12	7	7	4	7	11	5	7	5	7	7	11	6	8	7	3	9	8	30	19	15	14	12	5	17	9			139	113	252		
DHIDHDHOO SCHOOL	DHIDHDHOO	G	2	4					1		1				1	3	2		1												6	9	15		
DHIGURASHU SCHOOL	DHIGURAH	G							5	2	3	4	5	9	3	9	3	5	7	6	5	6	9	17								40	58	98	
FENFUSHI SCHOOL	FENFUSHI	G							5	9	17	7	8	7	7	8	4	14	13	15	14	15	12	16	12	9	8	5			100	105	205		
HANGNAAMEEDHOO SCHOOL	HANGNAAMEEDHOO	G							11	4	9	4	14	7	10	5	7	11	8	8	22	19	12	14	1	7	9	5			103	84	187		
KUN'BURUDHOO SCHOOL	KUNBURUDHOO	G	6	4	5	7			6	8	6	3	5	9	2	12	5	5	5	3	3	4									43	55	98		
MANDHOO SCHOOL	MANDHOO	G							8	7	8	4	4	7	3	5	3	4														26	27	53	
OMADHOO SCHOOL	OMADHOO	G	17	16	7	9	8	9	7	10	13	8	8	14	13	6	12	11	8	15	25	38	11	15	11	12						140	163	303	
HANGNAAMEEDHOO PRE-SCHOOL	HANGNAAMEEDHOO	C	4	2	5	5	11	9																							20	16	36		
MAAMIGILI PRE-SCHOOL	MAAMIGILI	C	18	17	18	25	20	23																								56	65	121	
MAHIBADHOO PRE-SCHOOL	MAHIBADHOO	C	16	15	25	18	15	12																								56	45	101	
TOTAL			13	75	65	67	68	61	64	81	88	109	98	93	112	98	92	99	110	99	115	192	220	152	194	111	110	102	98	3	20	1342	1454	2796	

G - Government, C - Community, P - Private

ދިވެހިސަރުކާރުގެ ގެޒެޓްގައި ބަޔާންކުރި ގަވާއިދުގެ ތެރޭގައި ވާ ގޮތުން 2005 ވަނަ އަހަރުގެ ތެރޭގައި ވާ ގޮތުން

SCHOOLS' ENROLMENTS IN VAAVU ATOLL BY GRADE AND GENDER
(MARCH 2005)

SCHOOL	ISLAND	Type	NURS		LKG		UKG		GR. 1		GR. 2		GR. 3		GR. 4		GR. 5		GR. 6		GR. 7		GR. 8		GR. 9		GR. 10		SUBTOTAL		TOTAL
			F	M	F	M	F	M	F	M	F	M	F	M	F	M	F	M	F	M	F	M	F	M	F	M	F	M			
V. ATHOLHU MADHARUSAA	FULIDHOO	G							2	3	5	5	4	5	1	6	6	2	8	5	7	10	7	13	4	7	9	7	53	63	116
V. ATHOLHU THAULEEMEE MARUKAZU	FELIDHOO	G							3	6	3	3	4	6	7	13	3	7	6	12	6	10	17	11	6	8	5	4	60	80	140
KEYODHOO SCHOOL	KEYODHOO	G							5	5	3	6	6	9	2	5	6	5	6	6	17	16	9	14	9	15	10	16	73	97	170
RAKEEDHOO SCHOOL	RAKEEDHOO	G	1	3	2	2	1			3	4	1	2	1	4	2	2	3	2	4								20	17	37	
THINADHOO SCHOOL	THINADHOO	G	1	2	1				1	1					2	1												5	4	9	
TOTAL			5	2	5	3	2	1	11	15	14	14	18	21	14	26	19	16	22	26	32	40	33	38	19	30	24	27	211	261	472

G - Government , C - Community, P - Private

ދިވެހިސަރުކާރުގެ ގެޒެޓްގެ ސަފުހާ 100 ވަނަ އަދަދުގެ ތެރޭގައި 2005 ވަނަ އަހަރުގެ މާރޗް މަހުގެ ތެރޭގައި ސަރުކާރުގެ ސުމާރީ

SCHOOLS' ENROLMENTS IN MEEMU ATOLL BY GRADE AND GENDER
(MARCH 2005)

SCHOOL	ISLAND	Type	NURS		LKG		UKG		GR. 1		GR. 2		GR. 3		GR. 4		GR. 5		GR. 6		GR. 7		GR. 8		GR. 9		GR. 10		Special		SUBTOTAL		TOTAL	
			F	M	F	M	F	M	F	M	F	M	F	M	F	M	F	M	F	M	F	M	F	M	F	M	F	M	F	M	F	M		
M. ATHOLHU MADHARUSAA	KOLHUFUSHI	G							11	5	11	8	8	10	2	13	14	17	15	12	23	29	24	22	11	17	10	13			129	146	275	
M. ATHOLHU THAULEEMEE MARUKAZU	MULI	G							12	14	12	15	15	20	12	9	6	15	15	17	32	25	27	22	14	10	12	11			157	158	315	
DHIGGARU SCHOOL	DHIGGARU	G							5	6	2	7	7	8	10	14	11	15	15	9	19	25	28	38	20	24	30	23			147	169	316	
MADUVVAREE SCHOOL	MADVAREE	G							6	4	8	7	5	9	7	6	9	11	11	9	12	12	24	32							82	90	172	
MULAKU SCHOOL	MULAH	G							17	11	16	15	23	23	11	11	19	21	28	20	32	33	24	28	10	11	20	18	4	2	204	193	397	
NAALAAFUSHI SCHOOL	NAALAAFUSHI	G							6	3	2	3	2	2	5	3	5	4	2	3											22	18	40	
RAIMANDHOO SCHOOL	RAIMANDHOO	G							3	3	2	2		1	2	3	4	4	2	3	3	1									16	17	33	
VEYVASHU SCHOOL	VEYVAH	G			3	4	3	2	2	4	3	2	2	3	3	1	1	2	1	2											18	20	38	
AAINAA PRE-SCHOOL (AHLEE PRE-SCHOOL)	MULAH	P	8	4	5	14	13	14																							26	32	58	
VAANEETHUTHTHUKUDHINGE THAULEEMUDHEY CLASS	DHIGGARU	P	6	5	3	7	6	9																							15	21	36	
TOTAL			10	14	9	11	25	22	25	62	50	56	59	62	76	52	60	69	89	89	75	121	125	127	142	55	62	72	65	4	2	816	864	1680

G - Government , C - Community, P - Private

ދިވެހިސަރުކާރުގެ ގެޒެޓްގައި އާންމުކޮށް ބަޔާންކޮށްފައިވާ ގޮތުން ދިވެހިސަރުކާރުގެ ގެޒެޓްގައި ބަޔާންކޮށްފައިވާ ގޮތުން
 SCHOOLS' ENROLMENTS IN FAAFU ATOLL BY GRADE AND GENDER
 (MARCH 2005)

SCHOOL	ISLAND	Type	NURS		LKG		UKG		GR. 1		GR. 2		GR. 3		GR. 4		GR. 5		GR. 6		GR. 7		GR. 8		GR. 9		GR. 10		SUBTOTAL		TOTAL
			F	M	F	M	F	M	F	M	F	M	F	M	F	M	F	M	F	M	F	M	F	M	F	M	F	M			
F. ATHOLHU MADHARUSAA	FEEALI	G						7	14	4	12	11	13	16	12	14	13	16	13	33	15	21	16	12	5	12	7	146	120	266	
F. ATHOLHU THAULEEMEE MARUKAZU	NILANDHOO	G						23	19	23	21	22	25	21	28	22	20	26	32	40	46	28	20	10	6	12	13	227	230	457	
BILEHDHOO SCHOOL	BILEHDHOO	G						8	17	12	15	12	13	15	15	10	15	16	12	26	46	30	31	7	10	26	25	162	199	361	
DHARAN'BOODHOO SCHOOL	DHARAN'BOODHOO	G			1	1	3	2	3	4	3	2	2	5	4	4	4	5	5	3	2	6					27	32	59		
MAGOODHOO SCHOOL	MAGOODHOO	G						5	4	8	4	10	10	11	10	7	13	9	12	12	12	18	19	20	12	10	7	110	103	213	
F. MAGOODHOO NURSERY CLASS	MAGOODHOO	C	11	12	4	7	6	5																			21	24	45		
F. NILANDHOO PRE-SCHOOL	NILANDHOO	C	11	7	18	15	17	17																			46	39	85		
RASHEED PRE-SCHOOL	BILEHDHOO	P	10	10	18	15	5	12																			33	37	70		
TOTAL		8	32	29	41	38	31	36	46	58	50	54	57	66	67	69	57	66	72	72	113	125	97	86	49	33	60	52	772	784	1556

G - Government , C - Community, P - Private

ދިވެހިސަރުކާރުގެ ގެޒެޓްގައި ބަޔާންކުރި ގަވާއިދުގެ ތެރޭގައި ހިމާރުކޮށްފައިވާ ގޮތުން 2005 ވަނަ އަހަރުގެ ތިޔަ ខែގައި ދާއިރާގެ ސުމާރީ ގޮތުން ދިވެހިސަރުކާރުގެ ގެޒެޓްގައި ބަޔާންކުރި ގަވާއިދުގެ ތެރޭގައި ހިމާރުކޮށްފައިވާ ގޮތުން

SCHOOLS' ENROLMENTS IN DHAALU ATOLL BY GRADE AND GENDER
(MARCH 2005)

SCHOOL	ISLAND	Type	NURS		LKG		UKG		GR. 1		GR. 2		GR. 3		GR. 4		GR. 5		GR. 6		GR. 7		GR. 8		GR. 9		GR. 10		SUBTOTAL		TOTAL
			F	M	F	M	F	M	F	M	F	M	F	M	F	M	F	M	F	M	F	M	F	M	F	M	F	M			
DH. ATHOLHU MADHARUSAA	MEEDHOO	G							60	13	7	16	15	22	19	14	8	21	11	20	21	32	20	29	8	10	10	20	179	197	376
DH. ATHOLHU THAULEEMEE MARUKAZU	KUDAHUVADHOO	G							17	14	14	16	23	13	12	17	14	11	22	26	33	35	56	52	21	24	41	38	253	246	499
BAN'DIDHOO SCHOOL	BAN'DIDHOO	G							11	14	12	15	11	11	14	14	14	16	15	15	18	31	16	22	13	16	15	9	139	163	302
HULHUDHELI SCHOOL	HULHUDHELI	G			7	7	6	11	8	10	9	6	6	6	6	13	8	14	12	7	13	16	6	10	6	10	14	11	101	121	222
MAAEN'BOODHOO SCHOOL	MAAEN'BOODHOO	G							8	10	8	8	10	9	9	10	10	12	13	18	14	19	19	14	7	12		98	112	210	
RIN'BUDHOO SCHOOL	RIN'BUDHOO	G			4	1	4	3	4	4	10	6	6	9	8	6	6	6	14	11	9	9	11	9	14	8		90	72	162	
VAANEE SCHOOL	VAANEE	G							2	1	3	2	3	4	6	2	6	3	3	5	4	5						27	22	49	
KUDAHUVADHOO PRE-SCHOOL	KUDAHUVADHOO	C	13	11	11	23	18	10																				42	44	86	
DH. MEEDHOO PRE-SCHOOL	MEEDHOO	C	7	12	6	6	6	16																				19	34	53	
TOTAL			9	20 23	28 37	34 40	110 66	63 69	74 74	74 76	66 83	90 102	112 147	128 136	69 80	80 78	948	1011	1959												

G - Government , C - Community, P - Private

ދާލުތަކުގެ ބައިވެރިވާރުމުގެ ސަފުހާ ގުޅިގެން ދިވެހިސަރުކާރުގެ ގެޒެޓް ގައި ބަޔާންކޮށްފައިވާ ގޮތުގައި

SCHOOLS' ENROLMENTS IN THAA ATOLL BY GRADE AND GENDER
(MARCH 2005)

SCHOOL	ISLAND	Type	NURS		LKG		UKG		GR. 1		GR. 2		GR. 3		GR. 4		GR. 5		GR. 6		GR. 7		GR. 8		GR. 9		GR. 10		SUBTOTAL		TOTAL	
			F	M	F	M	F	M	F	M	F	M	F	M	F	M	F	M	F	M	F	M	F	M	F	M	F	M				
TH. ATHOLHU MADHARUSAA	GURAIIDHOO	G							9	15	14	10	18	17	18	16	18	16	17	21	18	32	38	51	27	28	36	38	213	244	457	
TH. ATHOLHU THAULEEMEE MARUKAZU	THIMARAFUSHI	G							10	20	14	15	19	18	16	23	23	32	24	37	34	52	28	44	30	23	27	24	225	288	513	
BURUNEE SCHOOL	BURUNEE	G							10	13	16	13	12	17	16	22	15	11	18	16	26	40	26	41	26	16	20	21	185	210	395	
DHIYAMIGILI SCHOOL	DHIYAMIGILI	G							6	12	7	4	3	8	12	5	9	16	9	5	4	20	18	13					68	83	151	
GAADHIFUSHI SCHOOL	GAADHIFUSHI	G	4	11					5	2	1	1	2	4	2	1	2	3	6	4	9	7							31	33	64	
HIRILANDHOO SCHOOL	HIRILANDHOO	G			13	15	17	12	12	10	9	17	10	18	21	8	8	19	13	14	17	19	8	13					128	145	273	
KAN'DOODHOO SCHOOL	KANDOODHOO	G			6	5	6	5	8	7	6	8	7	5	10	7	14	6	11	7	10	19	13	12					91	81	172	
KIN'BIDHOO SCHOOL	KIN'BIDHOO	G							10	17	13	18	16	8	9	19	8	17	17	14	20	22	19	15	10	11	13	15	135	156	291	
MADIFUSHI SCHOOL	MADIFUSHI	G							13	8	4	8	12	13	4	15	7	16	10	17	18	11	52	36					120	124	244	
OMADHOO SCHOOL	OMADHOO	G			3	1	3	4	5	6	8	4	4	9	4	5	12	6	1	8	4	5							44	48	92	
VANDHOO SCHOOL	VANDHOO	G							4	3	6	4	4	6	5	7	6	7	3	6	8	7							36	40	76	
VEYMANDOO SCHOOL	VEYMANDOO	G							7	7	6	13	17	1	18	15	13	14	9	10	21	18	21	20	18	23	20	28	150	149	299	
GURAIIDHOO PRE-SCHOOL	GURAIIDHOO	C	9	9	9	9	8	6																					26	24	50	
KIN'BIDHOO PRE-SCHOOL	KIN'BIDHOO	C	6	9	6	11	8	11																						20	31	51
VEYMANDOO PRE-SCHOOL	VEYMANDOO	C	4	5	9	14	8	8																						21	27	48
TOTAL			15	23	34	46	55	50	46	99	120	104	115	124	124	135	143	135	163	138	159	189	252	223	245	111	101	116	126	1493	1683	3176

G - Government , C - Community, P - Private

ދިވެހިސަރުކާރުގެ ގެޒެޓްގައި ބަޔާންކުރި ގޮތުގައި 2005 ވަނަ އަހަރުގެ މާރޗް ގަޑީގައި ލާމު އަތޮލުގައި ހުންނަ ސުލޯހު ސަލާމަތުގެ ސަބަބުން ސުލޯހު ސަލާމަތުގެ ސަބަބުން ސުލޯހު ސަލާމަތުގެ ސަބަބުން

SCHOOLS' ENROLMENTS IN LAAMU ATOLL BY GRADE AND GENDER
(MARCH 2005)

SCHOOL	ISLAND	Type	NURS		LKG		UKG		GR. 1		GR. 2		GR. 3		GR. 4		GR. 5		GR. 6		GR. 7		GR. 8		GR. 9		GR. 10		GR. 11		SUBTOTAL		TOTAL	
			F	M	F	M	F	M	F	M	F	M	F	M	F	M	F	M	F	M	F	M	F	M	F	M	F	M	F	M				
L. ATHOLHU MADHARUSAA	MAABAIHOO	G							3	10	12	8	15	17	8	13	15	14	10	14	18	22	27	25	5	8	22	14			135	145	280	
L. ATHOLHU THAULEEMEE MARUKAZU	FONADHOO	G							21	14	5	12	21	14	17	21	20	24	30	24	20	56	47	39	26	37	49	58	7	6	263	305	568	
MAAVASHU SCHOOL	MAAVAH	G							22	12	14	14	17	23	16	16	17	21	21	25	38	48	47	37	16	17	38	24			246	237	483	
DHAN'BIDHOO SCHOOL	DHAN'BIDHOO	G					4	8	10	10	9	15	10	7	6	7	12	7	13	6	9	10									73	70	143	
GAADHOO SCHOOL	GAADHOO	G	4	4	4	5	2	5	3	6	2	4			7	6	4	3	2	4											28	37	65	
THUNDEE SCHOOL	GAN	G							12	9	11	9	11	17	19	8	12	20													65	63	128	
HITHADHOO SCHOOL	HITHADHOO	G			6	5	8	12	11	12	9	13	8	17	11	12	13	20	16	16	12	18	13	15							107	140	247	
ISDHOO SCHOOL	ISDHOO	G							11	15	15	16	20	24	19	15	19	22	26	22	35	41	34	44	29	28	7	7			215	234	449	
ISDHOO-KALHAIDHOO SCHOOL	ISDHOO	G							24	25	16	13	12	14	15	13	18	18	29	25	18	24									132	132	264	
KALHAIDHOO MADHRASA	KALHAIDHOO	G							4	5	12	7	5	6	4	5	4	7	4	10	7	16									40	56	96	
KUNAHANDHOO MAKTHAB	KUNAHANDHOO	G							5	7	10	3	10	4	8	10	11	13	23	24	25	22	17	11							109	94	203	
MAAMENDHOO SCHOOL	MAAMENDHOO	G							12	15	13	14	20	15	14	20	23	16	19	23	18	26	11	12	13	15	4	4			147	160	307	
MATHIMARADHOO SCHOOL	GAN	G	15	14	7	10	10	5	13	17	5	14	9	14	8	11	9	17													76	102	178	
MUKURIMAGU MAKTHAB	GAN	G	12	4	9	10	8	10	7	5	8	10	17	10	11	11	14	11													86	71	157	
MUNDOO SCHOOL	MUNDOO	G			6	8	7	10	14	5	5	5	4	6	6	6	4	5	4	5	7	11	7	11							64	72	136	
MADHARUSATHUL HAMAD BIN KHALEEFA AH'SANEE	GAN	G																	60	69	80	73	64	95	24	23	36	51			264	311	575	
SIRAAJUDHHEEN PRE-SCHOOL	FONADHOO	C	7	12	6	7	5	6																						18	25	43		
IRIS THUTHUKUDHINGE' THAULEEMU DHEY CLASS	FONADHOO	P	8	6	7	6	7	8																							22	20	42	
RAHMATH PRE-SCHOOL	MAAVAH	P	9	6	14	13	16	12																							39	31	70	
TOTAL			19	55	46	59	64	67	76	172	167	146	157	179	188	169	174	195	218	257	267	287	367	267	289	113	128	156	158	7	6	2129	2305	4434

G - Government , C - Community , P - Private

ދިވެހިސަރުކާރުގެ ގެޒެޓް ގައި ބަޔާންކުރި ގަވާއިދުގެ ދަށުން 2005 ވަނަ އަހަރުގެ މާރޗް ގައި ގާއިފު އަލިފު އަތޮޅުގައި ހުންނަ ޅަނގަތަކުގެ ވަނަ އަދަދު

SCHOOLS' ENROLMENTS IN GAAFU ALIFU ATOLL BY GRADE AND GENDER
(MARCH 2005)

SCHOOL	ISLAND	Type	NURS		LKG		UKG		GR. 1		GR. 2		GR. 3		GR. 4		GR. 5		GR. 6		GR. 7		GR. 8		GR. 9		GR. 10		GR. 11		SUBTOTAL		TOTAL	
			F	M	F	M	F	M	F	M	F	M	F	M	F	M	F	M	F	M	F	M	F	M	F	M	F	M	F	M	F	M		
G.A. ATHOLHU MADHARUSAA	KOLAMAAFUSHI	G							8	18	17	25	19	14	16	14	13	20	21	22	33	19	24	36	16	20	21	12			188	200	388	
G.A. ATHOLHU THAULEEMEE MARUKAZU	VILIGILI	G							22	33	31	29	35	40	37	44	35	43	29	40	38	72	55	55	25	35	33	25	6	3	346	419	765	
DHAANDHOO SCHOOL	DHAANDHOO	G							14	19	21	12	13	18	17	24	22	16	24	28	32	36	25	18	17	8	8	11			193	190	383	
MADHRASATHUL SULTHAAN MOHAMED	DHEVVADHOO	G	7	5	7	9	8	11	10	5	7	9	11	14	7	9	9	16	7	11	10	13	8	12	9	18			100	132	232			
DHIYADHOO SCHOOL	DHIYADHOO	G							3	1	2	1			2	1	1	2	2	3		1							10	9	19			
GEMANAFUSHI SCHOOL	GEMANAFUSHI	G					17	23	16	25	12	30	27	17	19	12	24	29	20	22	22	25	18	20	21	7			196	210	406			
KANDUHULHUDHOO SCHOOL	KANDUHULHUDHOO	G							9	8	8	12	8	8	12	12	11	11	12	13	8	9							68	73	141			
KONDEY SCHOOL	KONDEY	G							1	4	3	8	6	4	5	6	6	3				5							21	30	51			
MAAMENDHOO SCHOOL	MAAMENDHOO	G							17	18	22	21	13	14	13	19	12	17	28	33	23	26	21	23	8	11	2	6			159	188	347	
NILANDHOO MADHRASAA	NILANDHOO	G							14	8	9	10	12	14	12	8	11	14	16	19	11	11	17	10	5	6			107	100	207			
THEORY PRE-SCHOOL	VILIGILI	P	16	16	18	16	8	18																					42	50	92			
ALI KOKKO MEMORIAL PRE-SCHOOL	VILIGILI	P	16	14	14	9	19	10																					49	33	82			
DAMYZ EARLY CHILDHOOD EDUCATION CLASS	DHAANDHOO	P	4	4	4	3	7	6																					15	13	28			
SINCERE - THUTHUKUDHINGE THAULEEMDHEY CLASS	DHAANDHOO	P	14	6	6	6	13	11																					33	23	56			
MANAARAA - THUTHUKUDHINGE THAULEEMUDHEY CLASS	MAAMENDHOO	P	9	5	1	6	10	5																					20	16	36			
SIKANDHAREE PRE-SCHOOL	MAAMENDHOO	P	14	8	8	4	11	7																					33	19	52			
BUNYAAN PRE-SCHOOL	MAAMENDHOO	P	5	3	5	1	5	2																					15	6	21			
TOTAL			17	85	61	63	54	98	93	114	139	132	157	144	143	140	149	144	171	159	191	177	217	168	174	101	105	64	54	6	3	1595	1711	3306

G - Government , C - Community, P - Private

ދިވެހިސަރުކާރުގެ ގެޒެޓް ގައި ބަޔާންކުރި ގަވާއިދުގެ ދަށުން 2005 ވަނަ އަހަރުގެ މާރޗް ގައި ގާއިދު ދަޅުގަނޑުގެ ސަރުކާރުގެ ފަރާތުން ކުރިއަށް ގެންދާ ސަފުޞާލާތަކާ ބެހޭ ގޮތުން ބަޔާންކުރި ގަވާއިދުގެ ދަށުން

**SCHOOLS' ENROLMENTS IN GAAFU DHAALU ATOLL BY GRADE AND GENDER
(MARCH 2005)**

SCHOOL	ISLAND	Type	NURS		LKG		UKG		GR. 1		GR. 2		GR. 3		GR. 4		GR. 5		GR. 6		GR. 7		GR. 8		GR. 9		GR. 10		SUBTOTAL		TOTAL	
			F	M	F	M	F	M	F	M	F	M	F	M	F	M	F	M	F	M	F	M	F	M	F	M	F	M	F	M		
G.DH. ATHOLHU MADHARUSAA	GADHDHOO	G							29	26	19	18	18	27	23	26	29	23	40	47	34	39	24	34	11	7	15	13	242	260	502	
G.DH. ATHOLHU THAULEEMEE MARUKAZU	THINADHOO	G							13	13	20	20	25	28	11	30	31	37	39	31	119	138	113	100	98	95	82	75	551	567	1118	
FIYOAREE SCHOOL	FIYOAREE	G							11	8	18	10	17	10	19	8	13	16	14	18	11	6							103	76	179	
HOADEHDHOO SCHOOL	HOADEHDHOO	G	2	9	11	3	5	6	4	6	11	10	10	9	10	6	12	12	7	17	18	10	17	21	8	8			115	117	232	
JAMAALUDEEN MADHRASAA	VAADHOO	G							13	13	7	8	12	20	14	13	16	14	12	16	16	15							90	99	189	
MADAVELI SCHOOL	MADAVELI	G							15	14	7	19	16	25	13	17	25	18	21	13	25	37	24	30	14	6	23	29	183	208	391	
NADALLA SCHOOL	NADELLAA	G							10	12	15	6	11	9	9	11	10	14	16	17	13	15							84	84	168	
RATHAFANDHOO SCHOOL	RATHAFANDHOO	G							3	10	7	14	6	13	15	8	14	10	8	11	5	5							58	71	129	
HUVADHOO SCHOOL	FARES	G							13	14	11	9	19	11	14	11	18	20	22	14	10	24	26	31	3	9			136	143	279	
ABOBAKURU SCHOOL	THINADHOO	G							26	49	31	32	40	39	23	49	46	40	38	34									204	243	447	
AMEER IBRAHIM PRE-SCHOOL	THINADHOO	P	9	13	15	11	16	11																					40	35	75	
RAULAA PRE-SCHOOL	THINADHOO	P	16	14	12	11	9	9																					37	34	71	
M.M. PRE-SCHOOL	THINADHOO	P	3	5	8	4																							11	9	20	
NURSERY AND TUTORIAL PRE-SCHOOL	THINADHOO	P	11	10	9	8	8	9																						28	27	55
SAPPHIRE THUTHU KUDHINGE THAULEEMU DHEY CLASS	NADELLAA	P	10	10	8	8	3	5																					21	23	44	
ULOOMIYYA PRE-SCHOOL	THINADHOO	P	10	14	12	13	14	13																						36	40	76
TODDLER'S PRE-SCHOOL	GADHDHOO	P	6	5	11	11	14	12																						31	28	59
MAAIRA PRE-SCHOOL	FARES	P	5	7	7	10	11	13																						23	30	53
ALIKILEGEFAANU MEMORIAL PRE-SCHOOL	FIYOAREE	P	6	7	7	4	5	4																						18	15	33
ROASHAN PRE-SCHOOL	RATHAFANDHOO	P	7	4	10	7	7	10																						24	21	45
AMHAA PRE-SCHOOL	MADAVELI	P	7	13	8	13	9	10																						24	36	60
MOHAMED IBRAHIM MEMORIAL PRE-SCHOOL	MADAVELI	P	3	3	2	1																								5	4	9
MISBAAHUL HUDHAA SCHOOL	THINADHOO	P																			31	19	10	7	11	15	6	16	58	57	115	
TOTAL			23	95	114	120	104	101	102	137	165	146	146	174	191	151	179	214	204	217	218	282	308	214	223	145	140	126	133	2122	2227	4349

G - Government , C - Community, P - Private

މާލެ ސަރުކާރުގެ ފަރާތުން ދިވެހިރާއްޖޭގެ ޅެހިއްލުމުގެ ޖަނަރަލް ޖަލްސާގެ ދަށުން ޖަނަރަލް ޖަލްސާގެ ފަރާތުން

SCHOOLS' ENROLMENTS IN GNAVIYANI ATOLL BY GRADE AND GENDER
(MARCH 2005)

SCHOOL	Type	NURS		LKG		UKG		GR. 1		GR. 2		GR. 3		GR. 4		GR. 5		GR. 6		GR. 7		GR. 8		GR. 9		GR. 10		GR. 11		SUBTOTAL		TOTAL	
		F	M	F	M	F	M	F	M	F	M	F	M	F	M	F	M	F	M	F	M	F	M	F	M	F	M	F	M				
GN. ATHOLHU THAULEEMEE MARUKAZU	G																	21	23	52	56	217	231	79	78	148	100	25	9	542	497	1039	
FUVAMULAK SCHOOL	G							25	24	29	26	26	17	20	18	34	38	26	21	31	38									191	182	373	
MADHRASATHUL SHEIKH MOHAMED JAMAALUDHEEN	G							27	35	48	38	34	37	27	35	56	56	31	55	55	43									278	299	577	
HAFIZ AHMED SCHOOL	G							33	31	43	49	37	57	26	37	52	52	35	34	41	35									267	295	562	
MALE'GAMI PRE-SCHOOL	C	9	3	2	4	5	5																							16	12	28	
ZIKRAA SCHOOL	P	43	26	28	32	32	40																							103	98	201	
MANHAJUL HUDHAA PRE-SCHOOL	P	18	14	35	24	16	20																							69	58	127	
FOUNDATION SCHOOL	P	22	21	18	30	30	29																							70	80	150	
ULAA PRE-SCHOOL	P	5	5	10	5	5	10																							20	20	40	
TOTAL		9	97	69	93	95	88	104	85	90	120	113	97	111	73	90	142	146	113	133	179	172	217	231	79	78	148	100	25	9	1556	1541	3097

G - Government , C - Community, P - Private

ދިވެހިސަރުކާރުގެ ގެޒެޓް ގައި ބަޔާންކުރި ގޮތުގައި 2005 ވަނަ އަހަރުގެ މާރޗް ގައި ސީނު ގެޒެޓް ގައި ބަޔާންކުރި ގޮތުގައި

SCHOOLS' ENROLMENTS IN SEENU ATOLL BY GRADE AND GENDER
(MARCH 2005)

SCHOOL	ISLAND	Type	NURS		LKG		UKG		GR. 1		GR. 2		GR. 3		GR. 4		GR. 5		GR. 6		GR. 7		GR. 8		GR. 9		GR. 10		GR. 11		GR. 12		SUBTOTAL			TOTAL		
			F	M	F	M	F	M	F	M	F	M	F	M	F	M	F	M	F	M	F	M	F	M	F	M	F	M	F	M	F	M	F	M				
S. ATHOLHU MADHARUSAA	HULHUDHOO	G																			45	57	48	75	24	12	35	26							152	170	322	
S. ATHOLHU THAULEEMEE MARAUKAZU	HITHADHOO	G							51	39	61	58	61	73	87	76	77	85	84	95	104	102														525	528	1053
FEYDHOO SCHOOL	FEYDHOO	G							27	27	23	29	23	32	26	17	26	55	38	39	35	79	37	26	30	17	26	18								291	339	630
HITHADHOO SCHOOL	HITHADHOO	G							68	53	53	63	71	68	68	60	75	64	75	80	101	123														511	511	1022
IRUSHAADHIYYA SCHOOL	MARADHOO FEYDHOO	G																	33	50	32	54	31	34	25	23	37	27							158	188	346	
MUHIBUDHDHEEN SCHOOL	HITHADHOO	G																					132	106	211	154	233	186	34	42	48	34			658	522	1180	
SHAMSUDHEEN SCHOOL	MEEDHOO	G							15	12	24	22	24	23	20	25	20	19	20	22																123	123	246
HULHUDHOO SCHOOL	HULHUDHOO	G							11	17	14	16	16	16	16	18	12	12	14	19																83	98	181
MARADHOO SCHOOL	MARADHOO	G							4	4	23	20	23	25	31	26	35	27																		116	102	218
MARADHOO-FEYDHOO SCHOOL	MARADHOO FEYDHOO	G							9	12	10	11	14	18	8	20	16	18	13	15	13	23														83	117	200
ALMADHRASATHUL ISLAMIYYA	HITHADHOO	G																					83	114	44	50									127	164	291	
ASRIYYA THUTHUKUDHINGE THAULEEMUDHEY CLASS	MEEDHOO	P	9	2	3	3	5	2																											17	7	24	
MEDHUVALU SCHOOL	HITHADHOO	P	50	43	51	66	46	58																											147	167	314	
NOORANEE SCHOOL	HITHADHOO	P	11	13	20	26	21	32	9	8	9	11	7	7	8	6	9	11	9	13	11	12													114	139	253	
ADDU COMPREHENSIVE SCHOOL	HITHADHOO	P																					9	11	24	33	42	48							75	92	167	
SAEEDHIYYA PRE-SCHOOL	HITHADHOO	P	30	21	21	22	22	19																											73	62	135	
SHAREEFEE PRE-SCHOOL	MEEDHOO	P	4	7	12	15	11	6																											27	28	55	
NASRIYYA PRE-SCHOOL	HULHUDHOO	P	11	8	12	13	15	15																											38	36	74	
KUDHIMAA PRE-SCHOOL	FEYDHOO	P	39	43	29	29	22	23																											90	95	185	
SHEIKH HUSSAIN RAHA PRE-SCHOOL	HITHADHOO	P	3	3																															3	3	6	
UJAALAA PRE-SCHOOL	MARADHOO FEYDHOO	P	20	26	15	16	25	28																											60	70	130	
AMAAN PRE-SCHOOL	MARADHOO	P	21	22	16	22	13	20																											50	64	114	
TOTAL			21	198	188	179	212	180	203	194	172	217	230	239	262	264	248	270	291	286	333	341	450	340	366	358	289	373	305	34	42	48	34	3521	3625	7146		

G - Government, C - Community, P - Private

© 2005, Ministry of Education, Republic of Maldives

ISBN 99915-61-30-7

Policy Planning and Research Section

Ministry of Education

Ghaazee Building, Male', Republic of Maldives.

Tel: (960) 3323261, 3323262 Fax: (960) 3321201

E-mail: e_sec@thauleem.net

URL: <http://www.moe.gov.mv>